

# FAM84A Antibody



PACO58368

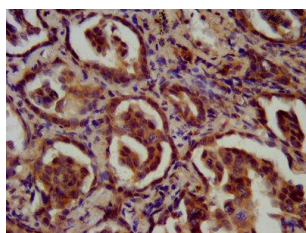
---

## Product Information

<b>Size:</b> 50ug	<b>Protein Background:</b>
<b>Reactivity:</b> Human	<b>Gene ID:</b> FAM84A
<b>Source:</b> Rabbit	<b>Uniprot</b> Q96KN4
<b>Isotype:</b> IgG	<b>Synonyms:</b> Protein FAM84A (Neurologic sensory protein 1) (NSE1), FAM84A, NSE1
<b>Applications:</b> ELISA, IHC	<b>Immunogen:</b> Recombinant Human Protein FAM84A protein (15-144AA).
<b>Recommended dilutions:</b> ELISA:1:2000-1:10000, IHC:1:200-1:500	<b>Storage:</b> Preservative: 0.03% Proclin 300. Constituents: 50% Glycerol, 0.01M PBS, pH 7.4

## Product Images

---



IHC image of PACO58368 diluted at 1:200 and staining in paraffin-embedded human liver cancer performed on a Leica Bond™ system. After dewaxing and hydration, antigen retrieval was mediated by high pressure in a citrate buffer (pH 6.0). Section was blocked with 10% normal goat serum 30min at RT. Then primary antibody (1% BSA) was incubated at 4°C overnight. The primary is detected by a biotinylated secondary antibody and visualized using an HRP conjugated SP system.