

NETO1 Antibody



PAC058348

Product Information

Size:

50ug

Reactivity:

Human

Source:

Rabbit

Isotype:

IgG

Applications:

ELISA, WB, IF

Recommended dilutions:

ELISA:1:2000-1:10000, WB:1:500-1:5000,
IF:1:50-1:200

Protein Background:

Involved in the development and/or maintenance of neuronal circuitry. Accessory subunit of the neuronal N-methyl-D-aspartate receptor (NMDAR) critical for maintaining the abundance of GRIN2A-containing NMDARs in the postsynaptic density. Regulates long-term NMDA receptor-dependent synaptic plasticity and cognition, at least in the context of spatial learning and memory.

Gene ID:

NETO1

Uniprot

Q8TDF5

Synonyms:

Neuropilin and tolloid-like protein 1 (Brain-specific transmembrane protein containing 2 CUB and 1 LDL-receptor class A domains protein 1), NETO1, BTCL1

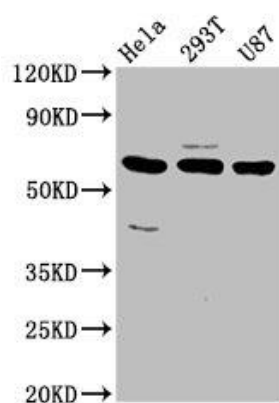
Immunogen:

Recombinant Human Neuropilin and tolloid-like protein 1 protein (367-507AA).

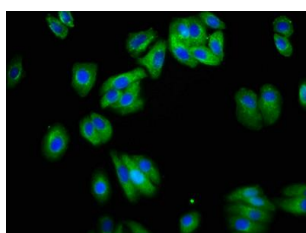
Storage:

Preservative: 0.03% Proclin 300. Constituents: 50% Glycerol, 0.01M PBS, pH 7.4

Product Images



Western Blot. Positive WB detected in: HeLa whole cell lysate, 293T whole cell lysate, U87 whole cell lysate. All lanes: NETO1 antibody at 3.2µg/ml. Secondary: Goat polyclonal to rabbit IgG at 1/50000 dilution. Predicted band size: 61, 18 kDa. Observed band size: 61 kDa.



Immunofluorescence staining of HepG2 cells with PACO58348 at 1:200, counter-stained with DAPI. The cells were fixed in 4% formaldehyde, permeabilized using 0.2% Triton X-100 and blocked in 10% normal Goat Serum. The cells were then incubated with the antibody overnight at 4°C. The secondary antibody was Alexa Fluor 488-conjugated AffiniPure Goat Anti-Rabbit IgG(H+L).