

SLC5A8 Antibody



PACO58320

Product Information

Size:

50ug

Reactivity:

Human

Source:

Rabbit

Isotype:

IgG

Applications:

ELISA, IF

Recommended dilutions:

ELISA:1:2000-1:10000, IF:1:50-1:200

Protein Background:

Gene ID:

SLC5A8

Uniprot

Q8N695

Synonyms:

Sodium-coupled monocarboxylate transporter 1 (Apical iodide transporter) (Electrogenic sodium monocarboxylate cotransporter) (Sodium iodide-related cotransporter) (Solute carrier family 5 member 8), SLC5A8, AIT SMCT SMCT1

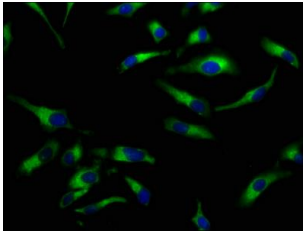
Immunogen:

Recombinant Human Sodium-coupled monocarboxylate transporter 1 protein (540-610AA).

Storage:

Preservative: 0.03% Proclin 300. Constituents: 50% Glycerol, 0.01M PBS, pH 7.4

Product Images



Immunofluorescence staining of HeLa cells with PACO58320 at 1:100, counter-stained with DAPI. The cells were fixed in 4% formaldehyde, permeabilized using 0.2% Triton X-100 and blocked in 10% normal Goat Serum. The cells were then incubated with the antibody overnight at 4°C. The secondary antibody was Alexa Fluor 488-conjugated AffiniPure Goat Anti-Rabbit IgG(H+L).