

PNPLA5 Antibody



PACO58248

Product Information

Size:

50ug

Reactivity:

Human

Source:

Rabbit

Isotype:

IgG

Applications:

ELISA, WB, IHC, IF

Recommended dilutions:

ELISA:1:2000-1:10000, WB:1:500-1:5000,
IHC:1:500-1:1000, IF:1:50-1:200

Protein Background:

Lipid hydrolase.

Gene ID:

PNPLA5

Uniprot

Q7Z6Z6

Synonyms:

Patatin-like phospholipase domain-containing protein 5 (EC 3.1.1) (GS2-like protein),
PNPLA5, GS2L

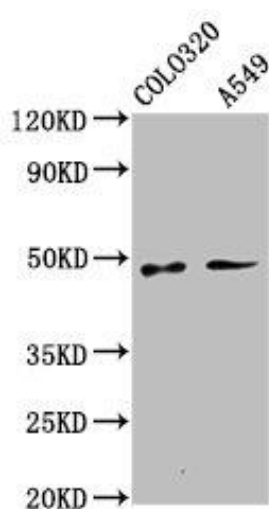
Immunogen:

Recombinant Human Patatin-like phospholipase domain-containing protein 5 protein
(90-205AA).

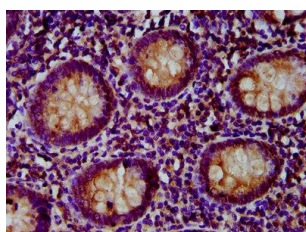
Storage:

Preservative: 0.03% Proclin 300. Constituents: 50% Glycerol, 0.01M PBS, pH 7.4

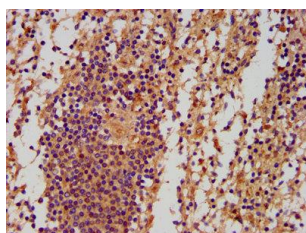
Product Images



Western Blot. Positive WB detected in: Colo320 whole cell lysate, A549 whole cell lysate. All lanes: PNPLA5 antibody at 3.1 μ g/ml. Secondary. Goat polyclonal to rabbit IgG at 1/50000 dilution. Predicted band size: 48, 36 kDa. Observed band size: 48 kDa.



IHC image of PACO58248 diluted at 1:500 and staining in paraffin-embedded human appendix tissue performed on a Leica BondTM system. After dewaxing and hydration, antigen retrieval was mediated by high pressure in a citrate buffer (pH 6.0). Section was blocked with 10% normal goat serum 30min at RT. Then primary antibody (1% BSA) was incubated at 4°C overnight. The primary is detected by a biotinylated secondary antibody and visualized using an HRP conjugated SP system.



IHC image of PACO58248 diluted at 1:500 and staining in paraffin-embedded human spleen tissue performed on a Leica BondTM system. After dewaxing and hydration, antigen retrieval was mediated by high pressure in a citrate buffer (pH 6.0). Section was blocked with 10% normal goat serum 30min at RT. Then primary antibody (1% BSA) was incubated at 4°C overnight. The primary is detected by a biotinylated secondary antibody and visualized using an HRP conjugated SP system.