

PACO58240

Product Information

Size:

50ug

Reactivity:

Human, Rat

Source:

Rabbit

Isotype:

IgG

Applications:

ELISA, WB

Recommended dilutions:

ELISA:1:2000-1:10000, WB:1:500-1:5000

Protein Background:

Required for the transport of GPI-anchored proteins to the plasma membrane. Probable acetyltransferase, which acetylates the inositol ring of phosphatidylinositol during biosynthesis of GPI-anchor. Acetylation during GPI-anchor biosynthesis is not essential for the subsequent mannosylation and is usually removed soon after the attachment of GPIs to proteins.

Gene ID:

PIGW

Uniprot

Q7Z7B1

Synonyms:

Phosphatidylinositol-glycan biosynthesis class W protein (PIG-W) (EC 2.3), PIGW

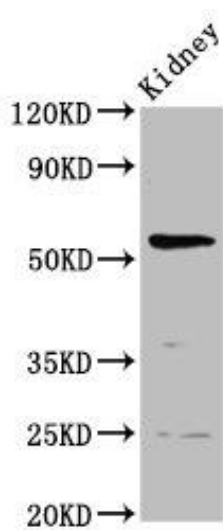
Immunogen:

Recombinant Human Phosphatidylinositol-glycan biosynthesis class W protein (392-448AA).

Storage:

Preservative: 0.03% Proclin 300. Constituents: 50% Glycerol, 0.01M PBS, pH 7.4

Product Images



Western Blot. Positive WB detected in: Rat kidney tissue. All lanes: PIGW antibody at 3.7 μ g/ml. Secondary. Goat polyclonal to rabbit IgG at 1/50000 dilution. Predicted band size: 57 kDa. Observed band size: 57 kDa.