

PACO58204

Product Information

Size:

50ug

Reactivity:

Human

Source:

Rabbit

Isotype:

IgG

Applications:

ELISA, IHC

Recommended dilutions:

ELISA:1:2000-1:10000, IHC:1:200-1:500

Protein Background:

Plays a role in the catabolism of L-fucose, a sugar that is part of the carbohydrates that are attached to cellular glycoproteins. Catalyzes the dehydration of L-fuconate to 2-keto-3-deoxy-L-fuconate by the abstraction of the 2-proton to generate an enediolate intermediate that is stabilized by the magnesium ion.

Gene ID:

ENOSF1

Uniprot

Q7L5Y1

Synonyms:

Mitochondrial enolase superfamily member 1 (EC 4.2.1.68) (Antisense RNA to thymidylate synthase) (rTS) (L-fuconate dehydratase), ENOSF1, RTS TYMSAS

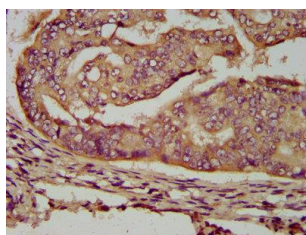
Immunogen:

Recombinant Human Mitochondrial enolase superfamily member 1 protein (171-286AA).

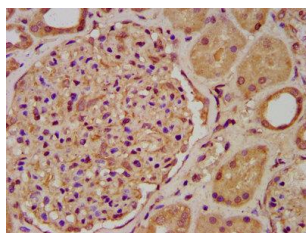
Storage:

Preservative: 0.03% Proclin 300. Constituents: 50% Glycerol, 0.01M PBS, pH 7.4

Product Images



IHC image of PACO58204 diluted at 1:200 and staining in paraffin-embedded human endometrial cancer performed on a Leica Bond™ system. After dewaxing and hydration, antigen retrieval was mediated by high pressure in a citrate buffer (pH 6.0). Section was blocked with 10% normal goat serum 30min at RT. Then primary antibody (1% BSA) was incubated at 4°C overnight. The primary is detected by a biotinylated secondary antibody and visualized using an HRP conjugated SP system.



IHC image of PACO58204 diluted at 1:200 and staining in paraffin-embedded human kidney tissue performed on a Leica Bond™ system. After dewaxing and hydration, antigen retrieval was mediated by high pressure in a citrate buffer (pH 6.0). Section was blocked with 10% normal goat serum 30min at RT. Then primary antibody (1% BSA) was incubated at 4°C overnight. The primary is detected by a biotinylated secondary antibody and visualized using an HRP conjugated SP system.