

# BZLF2 Antibody



PACO58096

---

## Product Information

**Size:**

50ug

**Reactivity:**

Epstein-Barr virus

**Source:**

Rabbit

**Isotype:**

IgG

**Applications:**

ELISA, WB

**Recommended dilutions:**

ELISA:1:2000-1:10000, WB:1:500-1:5000

**Protein Background:**

Plays a role in virion attachment to host B-lymphocytes, through binding to leukocyte antigen (HLA) class II and subsequently participates in fusion of the virion with host membranes. May act as a tropism switch that directs fusion with B-lymphocytes and inhibits fusion with epithelial cells. Additionally, hampers T-cell recognition via HLA class II molecules through steric hindrance of T-cell receptor-class II-peptide interaction.

**Gene ID:**

BZLF2

**Uniprot**

P03205

**Synonyms:**

Glycoprotein 42 (gp42) [Cleaved into: Soluble gp42]

**Immunogen:**

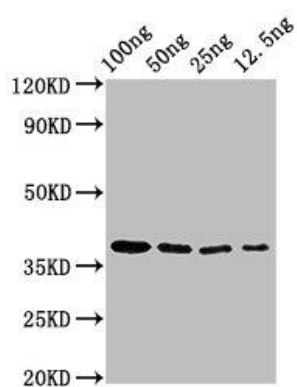
Recombinant Epstein-Barr virus Glycoprotein 42 protein (34-223AA).

**Storage:**

Preservative: 0.03% Proclin 300. Constituents: 50% Glycerol, 0.01M PBS, pH 7.4

## Product Images

---



Western Blot. Positive WB detected in Recombinant protein. All lanes: BZLF2 antibody at 3 $\mu$ g/ml. Secondary. Goat polyclonal to rabbit IgG at 1/50000 dilution. Predicted band size: 38 kDa. Observed band size: 38 kDa.