

Product Information

Size:

50ug

Reactivity:

Human

Source:

Rabbit

Isotype:

IgG

Applications:

ELISA, IF

Recommended dilutions:

ELISA:1:2000-1:10000, IF:1:50-1:200

Protein Background:

cytoplasm, cytosol, cytosolic small ribosomal subunit, extracellular exosome, focal adhesion, nucleoplasm, small ribosomal subunit, structural constituent of ribosome, zinc ion binding, nuclear-transcribed mRNA catabolic process, nonsense-mediated decay.

Gene ID:

RPS29

Uniprot

P62273

Synonyms:

40S ribosomal protein S29 (Small ribosomal subunit protein uS14), RPS29

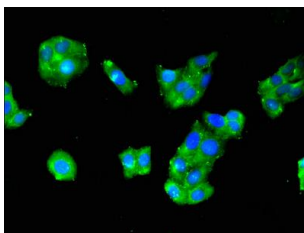
Immunogen:

Recombinant Human 40S ribosomal protein S29 protein (2-56AA).

Storage:

Preservative: 0.03% Proclin 300. Constituents: 50% Glycerol, 0.01M PBS, pH 7.4

Product Images



Immunofluorescent analysis of HepG2 cells using PACO57952 at dilution of 1:100 and Alexa Fluor 488-conjugated AffiniPure Goat Anti-Rabbit IgG(H+L).