

## Product Information

**Size:**

50ug

**Reactivity:**

Human

**Source:**

Rabbit

**Isotype:**

IgG

**Applications:**

ELISA, IHC, IF

**Recommended dilutions:**

ELISA:1:2000-1:10000, IHC:1:200-1:500,  
IF:1:50-1:200

**Protein Background:**

Interferon-induced dynamin-like GTPase with potent antiviral activity against human immunodeficiency virus type 1 (HIV-1). Acts by targeting the viral capsid and affects the nuclear uptake and/or stability of the HIV-1 replication complex and the subsequent chromosomal integration of the proviral DNA. Exhibits antiviral activity also against simian immunodeficiency virus (SIV-mnd). May play a role in regulating nucleocytoplasmic transport and cell-cycle progression.

**Gene ID:**

MX2

**Uniprot**

P20592

**Synonyms:**

Interferon-induced GTP-binding protein Mx2 (Interferon-regulated resistance GTP-binding protein MxB) (Myxovirus resistance protein 2) (p78-related protein), MX2

**Immunogen:**

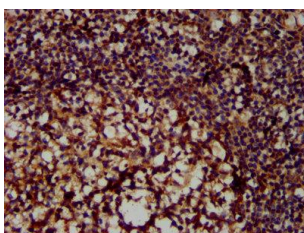
Recombinant Human Interferon-induced GTP-binding protein Mx2 protein (548-688AA).

**Storage:**

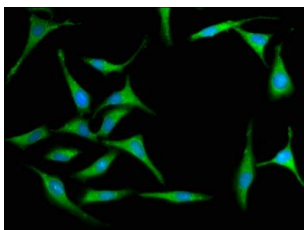
Preservative: 0.03% Proclin 300. Constituents: 50% Glycerol, 0.01M PBS, pH 7.4

## Product Images

---



IHC image of PACO57872 diluted at 1:300 and staining in paraffin-embedded human tonsil tissue performed on a Leica Bond™ system. After dewaxing and hydration, antigen retrieval was mediated by high pressure in a citrate buffer (pH 6.0). Section was blocked with 10% normal goat serum 30min at RT. Then primary antibody (1% BSA) was incubated at 4°C overnight. The primary is detected by a biotinylated secondary antibody and visualized using an HRP conjugated SP system.



Immunofluorescence staining of HeLa cells with PACO57872 at 1:100, counter-stained with DAPI. The cells were fixed in 4% formaldehyde, permeabilized using 0.2% Triton X-100 and blocked in 10% normal Goat Serum. The cells were then incubated with the antibody overnight at 4°C. The secondary antibody was Alexa Fluor 488-conjugated AffiniPure Goat Anti-Rabbit IgG(H+L).