

PACO57752

Product Information

Size:

50ug

Reactivity:

Human

Source:

Rabbit

Isotype:

IgG

Applications:

ELISA, WB

Recommended dilutions:

ELISA:1:2000-1:10000, WB:1:500-1:5000

Protein Background:

Gene ID:

ESRRB

Uniprot

O95718

Synonyms:

Steroid hormone receptor ERR2 (ERR beta-2) (Estrogen receptor-like 2) (Estrogen-related receptor beta) (ERR-beta) (Nuclear receptor subfamily 3 group B member 2), ESRRB, ERB2 ESRL2 NR3B2

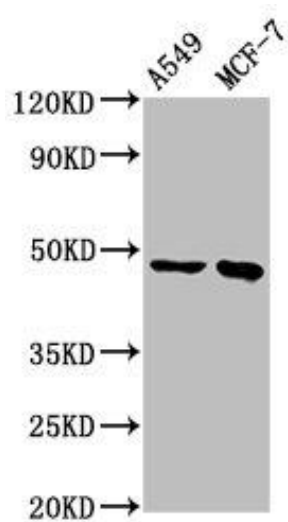
Immunogen:

Recombinant Human Steroid hormone receptor ERR2 protein (432-502AA).

Storage:

Preservative: 0.03% Proclin 300. Constituents: 50% Glycerol, 0.01M PBS, pH 7.4

Product Images



Western Blot. Positive WB detected in: A549 whole cell lysate, MCF-7 whole cell lysate. All lanes: ESRRB antibody at 3.7 μ g/ml. Secondary. Goat polyclonal to rabbit IgG at 1/50000 dilution. Predicted band size: 49, 57, 56 kDa. Observed band size: 49 kDa.