

# CEACAM16 Antibody



PACO57696

---

## Product Information

**Size:**

50ug

**Reactivity:**

Human

**Source:**

Rabbit

**Isotype:**

IgG

**Applications:**

ELISA, IHC

**Recommended dilutions:**

ELISA:1:2000-1:10000, IHC:1:500-1:1000

**Protein Background:**

Required for proper hearing, it may play a role in maintaining the integrity of the tectorial membrane.

**Gene ID:**

CEACAM16

**Uniprot**

Q2WEN9

**Synonyms:**

Carcinoembryonic antigen-related cell adhesion molecule 16 (Carcinoembryonic antigen-like 2), CEACAM16, CEAL2

**Immunogen:**

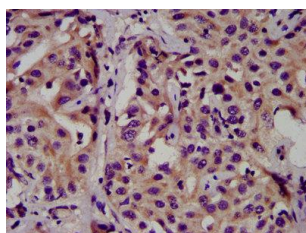
Recombinant Human Carcinoembryonic antigen-related cell adhesion molecule 16 protein (323-414AA).

**Storage:**

Preservative: 0.03% Proclin 300. Constituents: 50% Glycerol, 0.01M PBS, pH 7.4

## Product Images

---



IHC image of PACO57696 diluted at 1:500 and staining in paraffin-embedded human liver cancer performed on a Leica Bond™ system. After dewaxing and hydration, antigen retrieval was mediated by high pressure in a citrate buffer (pH 6.0). Section was blocked with 10% normal goat serum 30min at RT. Then primary antibody (1% BSA) was incubated at 4°C overnight. The primary is detected by a biotinylated secondary antibody and visualized using an HRP conjugated SP system.