

# ABL2 Antibody



PACO57648

---

## Product Information

**Size:**

50ug

**Reactivity:**

Human

**Source:**

Rabbit

**Isotype:**

IgG

**Applications:**

ELISA, WB

**Recommended dilutions:**

ELISA:1:2000-1:10000, WB:1:500-1:5000

**Protein Background:**

**Gene ID:**

ABL2

**Uniprot**

P42684

**Synonyms:**

Abelson tyrosine-protein kinase 2 (EC 2.7.10.2) (Abelson murine leukemia viral oncogene homolog 2) (Abelson-related gene protein) (Tyrosine-protein kinase ARG), ABL2, ABLL ARG

**Immunogen:**

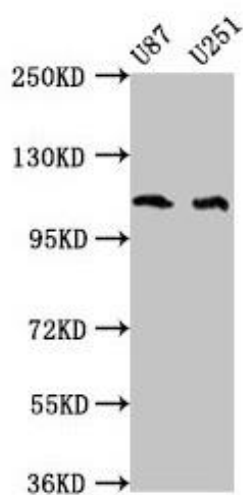
Recombinant Human Tyrosine-protein kinase ABL2 protein (862-1064AA).

**Storage:**

Preservative: 0.03% Proclin 300. Constituents: 50% Glycerol, 0.01M PBS, pH 7.4

## Product Images

---



Western Blot. Positive WB detected in: U87 whole cell lysate, U251 whole cell lysate. All lanes: ABL2 antibody at 4 $\mu$ g/ml. Secondary. Goat polyclonal to rabbit IgG at 1/50000 dilution. Predicted band size: 129, 125, 127, 115, 118, 116, 117, 61 kDa. Observed band size: 115 kDa.