

POPDC3 Antibody



PACO57520

Product Information

Size:

50ug

Reactivity:

Human

Source:

Rabbit

Isotype:

IgG

Applications:

ELISA, IF

Recommended dilutions:

ELISA:1:2000-1:10000, IF:1:200-1:500

Protein Background:

May play a role in the maintenance of heart function mediated, at least in part, through cAMP-binding.

Gene ID:

POPDC3

Uniprot

Q9HBV1

Synonyms:

Popeye domain-containing protein 3 (Popeye protein 3), POPDC3, POP3

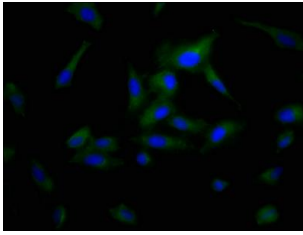
Immunogen:

Recombinant Human Popeye domain-containing protein 3 protein (130-291AA).

Storage:

Preservative: 0.03% Proclin 300. Constituents: 50% Glycerol, 0.01M PBS, pH 7.4

Product Images



Immunofluorescence staining of HeLa cells with PACO57520 at 1:200, counter-stained with DAPI. The cells were fixed in 4% formaldehyde, permeabilized using 0.2% Triton X-100 and blocked in 10% normal Goat Serum. The cells were then incubated with the antibody overnight at 4°C. The secondary antibody was Alexa Fluor 488-conjugated AffiniPure Goat Anti-Rabbit IgG(H+L).