

# KIF13B Antibody



PACO57496

---

## Product Information

**Size:**

50ug

**Reactivity:**

Human

**Source:**

Rabbit

**Isotype:**

IgG

**Applications:**

ELISA, IHC, IF

**Recommended dilutions:**

ELISA:1:2000-1:10000, IHC:1:200-1:500,  
IF:1:50-1:200

**Protein Background:**

Involved in reorganization of the cortical cytoskeleton. Regulates axon formation by promoting the formation of extra axons. May be functionally important for the intracellular trafficking of MAGUKs and associated protein complexes.

**Gene ID:**

KIF13B

**Uniprot**

Q9NQT8

**Synonyms:**

Kinesin-like protein KIF13B (Kinesin-like protein GAKIN), KIF13B, GAKIN KIAA0639

**Immunogen:**

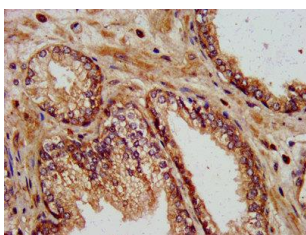
Recombinant Human Kinesin-like protein KIF13B protein (1531-1701AA).

**Storage:**

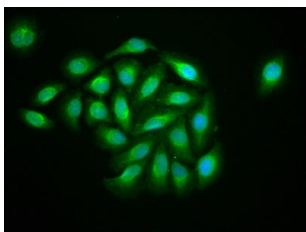
Preservative: 0.03% Proclin 300. Constituents: 50% Glycerol, 0.01M PBS, pH 7.4

## Product Images

---



IHC image of PACO57496 diluted at 1:400 and staining in paraffin-embedded human prostate cancer performed on a Leica Bond™ system.



Immunofluorescence staining of A549 cells with PACO57496 at 1:133, counter-stained with DAPI. The cells were fixed in 4% formaldehyde, permeabilized using 0.2% Triton X-100 and blocked in 10% normal Goat Serum. The cells were then incubated with the antibody overnight at 4°C. The secondary antibody was Alexa Fluor 488-conjugated AffiniPure Goat Anti-Rabbit IgG(H+L).