

MEGF9 Antibody



PACO57488

Product Information

Size:

50ug

Reactivity:

Human

Source:

Rabbit

Isotype:

IgG

Applications:

ELISA, WB, IHC, IF

Recommended dilutions:

ELISA:1:2000-1:10000, WB:1:500-1:5000,
IHC:1:200-1:500, IF:1:50-1:200

Protein Background:

Gene ID:

MEGF9

Uniprot

Q9H1U4

Synonyms:

Multiple epidermal growth factor-like domains protein 9 (Multiple EGF-like domains protein 9) (Epidermal growth factor-like protein 5) (EGF-like protein 5), MEGF9, EGFL5 KIAA0818

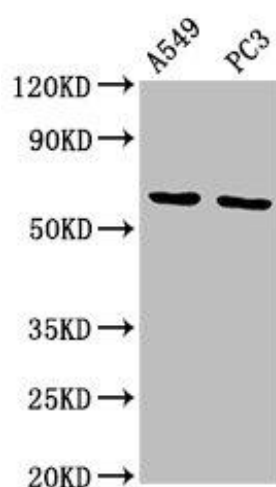
Immunogen:

Recombinant Human Multiple epidermal growth factor-like domains protein 9 protein (49-178AA).

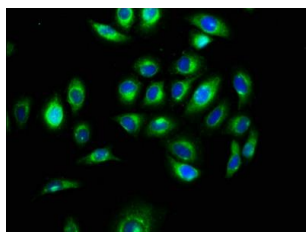
Storage:

Preservative: 0.03% Proclin 300. Constituents: 50% Glycerol, 0.01M PBS, pH 7.4

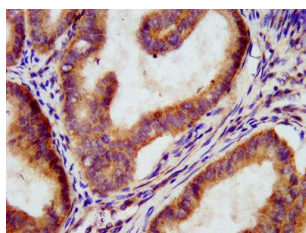
Product Images



Western Blot. Positive WB detected in: A549 whole cell lysate, PC-3 whole cell lysate. All lanes: MEGF9 antibody at 11.5µg/ml. Secondary: Goat polyclonal to rabbit IgG at 1/50000 dilution. Predicted band size: 63 kDa. Observed band size: 63 kDa.



Immunofluorescence staining of A549 cells with PACO57488 at 1:100, counter-stained with DAPI. The cells were fixed in 4% formaldehyde, permeabilized using 0.2% Triton X-100 and blocked in 10% normal Goat Serum. The cells were then incubated with the antibody overnight at 4°C. The secondary antibody was Alexa Fluor 488-conjugated AffiniPure Goat Anti-Rabbit IgG(H+L).



IHC image of PACO57488 diluted at 1:300 and staining in paraffin-embedded human endometrial cancer performed on a Leica Bond™ system. After dewaxing and hydration, antigen retrieval was mediated by high pressure in a citrate buffer (pH 6.0). Section was blocked with 10% normal goat serum 30min at RT. Then primary antibody (1% BSA) was incubated at 4°C overnight. The primary is detected by a biotinylated secondary antibody and visualized using an HRP conjugated SP system.