

# CAPS2 Antibody



PACO57436

---

## Product Information

**Size:**

50ug

**Reactivity:**

Human

**Source:**

Rabbit

**Isotype:**

IgG

**Applications:**

ELISA, WB, IHC

**Recommended dilutions:**

ELISA:1:2000-1:10000, WB:1:500-1:5000,  
IHC:1:500-1:1000

**Protein Background:**

calcium ion binding, calcium: sodium antiporter activity, calcium ion homeostasis.

**Gene ID:**

CAPS2

**Uniprot**

Q9BXY5

**Synonyms:**

Calcyphosin-2 (Calcyphosine-2), CAPS2

**Immunogen:**

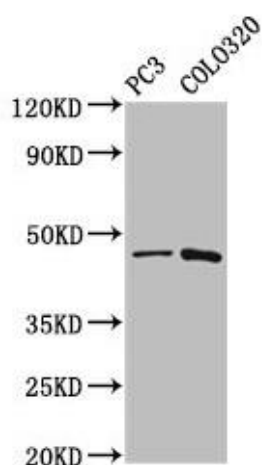
Recombinant Human Calcyphosin-2 protein (191-274AA).

**Storage:**

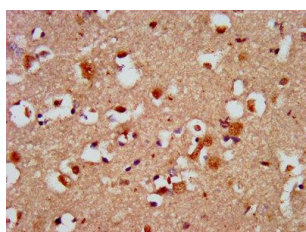
Preservative: 0.03% Proclin 300. Constituents: 50% Glycerol, 0.01M PBS, pH 7.4

## Product Images

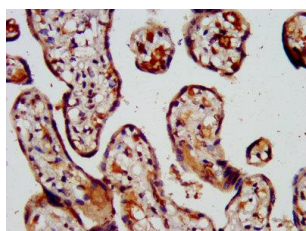
---



Western Blot. Positive WB detected in: PC-3 whole cell lysate, Colo320 whole cell lysate. All lanes: CAPS2 antibody at 5.2 $\mu$ g/ml. Secondary. Goat polyclonal to rabbit IgG at 1/50000 dilution. Predicted band size: 64, 45, 34 kDa. Observed band size: 45 kDa.



IHC image of PACO57436 diluted at 1:500 and staining in paraffin-embedded human brain tissue performed on a Leica Bond<sup>TM</sup> system. After dewaxing and hydration, antigen retrieval was mediated by high pressure in a citrate buffer (pH 6.0). Section was blocked with 10% normal goat serum 30min at RT. Then primary antibody (1% BSA) was incubated at 4°C overnight. The primary is detected by a biotinylated secondary antibody and visualized using an HRP conjugated SP system.



IHC image of PACO57436 diluted at 1:500 and staining in paraffin-embedded human placenta tissue performed on a Leica Bond<sup>TM</sup> system. After dewaxing and hydration, antigen retrieval was mediated by high pressure in a citrate buffer (pH 6.0). Section was blocked with 10% normal goat serum 30min at RT. Then primary antibody (1% BSA) was incubated at 4°C overnight. The primary is detected by a biotinylated secondary antibody and visualized using an HRP conjugated SP system.