

# ALS2CR12 Antibody



PACO57404

---

## Product Information

**Size:**

50ug

**Reactivity:**

Human

**Source:**

Rabbit

**Isotype:**

IgG

**Applications:**

ELISA, WB, IF

**Recommended dilutions:**

ELISA:1:2000-1:10000, WB:1:500-1:5000,  
IF:1:50-1:200

**Protein Background:**

**Gene ID:**

ALS2CR12

**Uniprot**

Q96Q35

**Synonyms:**

Amyotrophic lateral sclerosis 2 chromosomal region candidate gene 12 protein,  
ALS2CR12

**Immunogen:**

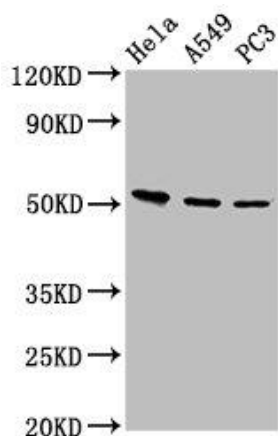
Recombinant Human Amyotrophic lateral sclerosis 2 chromosomal region candidate  
gene 12 protein (26-76AA).

**Storage:**

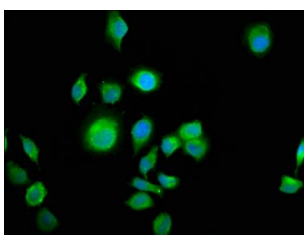
Preservative: 0.03% Proclin 300. Constituents: 50% Glycerol, 0.01M PBS, pH 7.4

## Product Images

---



Western Blot. Positive WB detected in: HeLa whole cell lysate, A549 whole cell lysate, PC-3 whole cell lysate. All lanes: ALS2CR12 antibody at 12 $\mu$ g/ml. Secondary. Goat polyclonal to rabbit IgG at 1/50000 dilution. Predicted band size: 53, 50 kDa. Observed band size: 53 kDa.



Immunofluorescence staining of A549 cells with PACO57404 at 1:100, counter-stained with DAPI. The cells were fixed in 4% formaldehyde, permeabilized using 0.2% Triton X-100 and blocked in 10% normal Goat Serum. The cells were then incubated with the antibody overnight at 4°C. The secondary antibody was Alexa Fluor 488-conjugated AffiniPure Goat Anti-Rabbit IgG(H+L).