

PACO57340

---

## Product Information

**Size:**

50ug

**Reactivity:**

Human, Rat

**Source:**

Rabbit

**Isotype:**

IgG

**Applications:**

ELISA, WB, IHC, IF

**Recommended dilutions:**

ELISA:1:2000-1:10000, WB:1:500-1:5000,  
IHC:1:200-1:500, IF:1:50-1:200

**Protein Background:**

Protein phosphatase which may play a role in the regulation of actin filament dynamics. Can dephosphorylate and activate the actin binding/depolymerizing factor cofilin, which subsequently binds to actin filaments and stimulates their disassembly.

**Gene ID:**

SSH3

**Uniprot**

Q8TE77

**Synonyms:**

Protein phosphatase Slingshot homolog 3 (EC 3.1.3.16) (EC 3.1.3.48) (SSH-like protein 3) (SSH-3L) (hSSH-3L), SSH3, SSH3L

**Immunogen:**

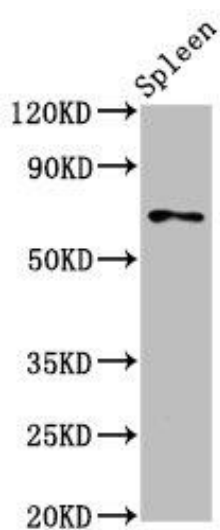
Recombinant Human Protein phosphatase Slingshot homolog 3 protein (480-659AA).

**Storage:**

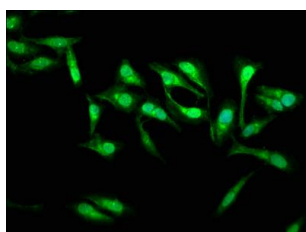
Preservative: 0.03% Proclin 300. Constituents: 50% Glycerol, 0.01M PBS, pH 7.4

## Product Images

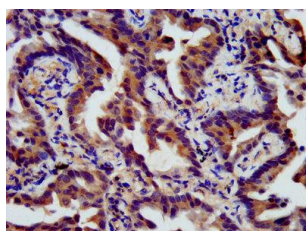
---



Western Blot. Positive WB detected in: Rat spleen tissue. All lanes: SSH3 antibody at 5.3 $\mu$ g/ml. Secondary. Goat polyclonal to rabbit IgG at 1/50000 dilution. Predicted band size: 73, 53, 57, 43, 17 kDa. Observed band size: 73 kDa.



Immunofluorescence staining of HeLa cells with PACO57340 at 1:133, counter-stained with DAPI. The cells were fixed in 4% formaldehyde, permeabilized using 0.2% Triton X-100 and blocked in 10% normal Goat Serum. The cells were then incubated with the antibody overnight at 4°C. The secondary antibody was Alexa Fluor 488-conjugated AffiniPure Goat Anti-Rabbit IgG(H+L).



IHC image of PACO57340 diluted at 1:400 and staining in paraffin-embedded human lung cancer performed on a Leica Bond<sup>TM</sup> system.