

FTL3 Antibody



PACO57028

Product Information

Size:

50ug

Reactivity:

Soybean

Source:

Rabbit

Isotype:

IgG

Applications:

ELISA, WB

Recommended dilutions:

ELISA:1:2000-1:10000, WB:1:500-1:5000

Protein Background:

Gene ID:

FTL3

Uniprot

E3NYP3

Synonyms:

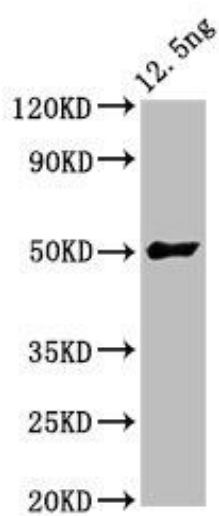
Immunogen:

Recombinant Soybean FT-like protein (1-176AA).

Storage:

Preservative: 0.03% Proclin 300. Constituents: 50% Glycerol, 0.01M PBS, pH 7.4

Product Images



Western Blot. Positive WB detected in Recombinant protein. All lanes: FTL3 antibody at 5.7 μ g/ml. Secondary. Goat polyclonal to rabbit IgG at 1/50000 dilution. Predicted band size: 50 kDa. Observed band size: 50 kDa.