

PACO56956

---

## Product Information

**Size:**

50ug

**Reactivity:**

Human

**Source:**

Rabbit

**Isotype:**

IgG

**Applications:**

ELISA, IF

**Recommended dilutions:**

ELISA:1:2000-1:10000, IF:1:50-1:200

**Protein Background:**

Involved in endosome dynamics. May coordinate membrane transport with the function of the cytoskeleton. Involved in the internalization and trafficking of activated tyrosine kinase receptors such as PDGFRB. Participates in the reorganization of actin cytoskeleton; the function seems to involve WHAMM and includes regulation of filopodia formation and actin filament bundling. Can modulate the effect of DAPK3 in reorganization of actin cytoskeleton and focal adhesion dissolution.

**Gene ID:**

RHOD

**Uniprot**

O00212

**Synonyms:**

Rho-related GTP-binding protein RhoD (Rho-related protein HP1) (RhoHP1), RHOD, ARHD

**Immunogen:**

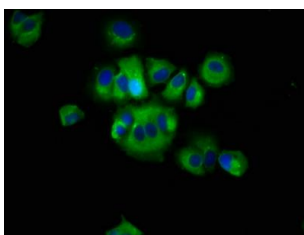
Recombinant Human Rho-related GTP-binding protein RhoD protein (1-80AA).

**Storage:**

Preservative: 0.03% Proclin 300. Constituents: 50% Glycerol, 0.01M PBS, pH 7.4

## Product Images

---



Immunofluorescence staining of MCF-7 cells with PACO56956 at 1:66, counter-stained with DAPI. The cells were fixed in 4% formaldehyde, permeabilized using 0.2% Triton X-100 and blocked in 10% normal Goat Serum. The cells were then incubated with the antibody overnight at 4°C. The secondary antibody was Alexa Fluor 488-conjugated AffiniPure Goat Anti-Rabbit IgG(H+L).