

# HEPACAM Antibody



PACO56820

---

## Product Information

**Size:**

50ug

**Reactivity:**

Human

**Source:**

Rabbit

**Isotype:**

IgG

**Applications:**

ELISA, WB, IF

**Recommended dilutions:**

ELISA:1:2000-1:10000, WB:1:500-1:5000,  
IF:1:200-1:500

**Protein Background:**

Involved in regulating cell motility and cell-matrix interactions. May inhibit cell growth through suppression of cell proliferation.

**Gene ID:**

HEPACAM

**Uniprot**

Q14CZ8

**Synonyms:**

Hepatocyte cell adhesion molecule (Protein hepaCAM), HEPACAM

**Immunogen:**

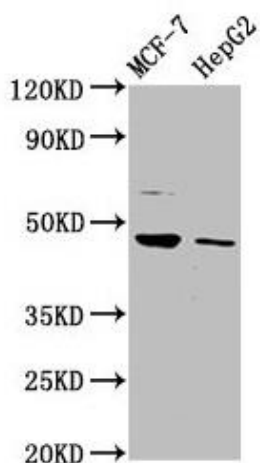
Recombinant Human Hepatocyte cell adhesion molecule protein (265-415AA).

**Storage:**

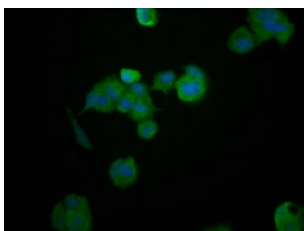
Preservative: 0.03% Proclin 300. Constituents: 50% Glycerol, 0.01M PBS, pH 7.4

## Product Images

---



Western Blot. Positive WB detected in: MCF-7 whole cell lysate, HepG2 whole cell lysate. All lanes: HEPACAM antibody at 3.2 $\mu$ g/ml. Secondary: Goat polyclonal to rabbit IgG at 1/50000 dilution. Predicted band size: 47, 41 kDa. Observed band size: 47 kDa.



Immunofluorescence staining of MCF-7 cells with PACO56820 at 1:200, counter-stained with DAPI. The cells were fixed in 4% formaldehyde, permeabilized using 0.2% Triton X-100 and blocked in 10% normal Goat Serum. The cells were then incubated with the antibody overnight at 4°C. The secondary antibody was Alexa Fluor 488-conjugated AffiniPure Goat Anti-Rabbit IgG(H+L).