

AFF2 Antibody



PACO56310

Product Information

Size:

50ug

Reactivity:

Human

Source:

Rabbit

Isotype:

IgG

Applications:

ELISA, WB

Recommended dilutions:

ELISA:1:2000-1:10000, WB:1:500-1:5000

Protein Background:

RNA-binding protein. Might be involved in alternative splicing regulation through an interaction with G-quartet RNA structure.

Gene ID:

AFF2

Uniprot

P51816

Synonyms:

AF4/FMR2 family member 2 (Fragile X E mental retardation syndrome protein) (Fragile X mental retardation 2 protein) (FMR2P) (Protein FMR-2) (Protein Ox19), AFF2, FMR2 OX19

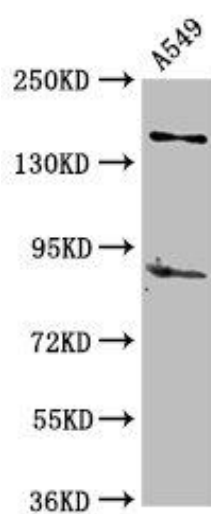
Immunogen:

Recombinant Human AF4/FMR2 family member 2 protein (575-705AA).

Storage:

Preservative: 0.03% Proclin 300. Constituents: 50% Glycerol, 0.01M PBS, pH 7.4

Product Images



Western Blot. Positive WB detected in: A549 whole cell lysate. All lanes: AFF2 antibody at 5 μ g/ml. Secondary. Goat polyclonal to rabbit IgG at 1/50000 dilution. Predicted band size: 145, 141, 48, 144, 106 kDa. Observed band size: 145 kDa.