

MAN2B2 Antibody



PACO56250

Product Information

Size:

50ug

Reactivity:

Human

Source:

Rabbit

Isotype:

IgG

Applications:

ELISA, WB, IHC

Recommended dilutions:

ELISA:1:2000-1:10000, WB:1:500-1:5000,
IHC:1:20-1:200

Protein Background:

extracellular exosome, lysosomal lumen, alpha-mannosidase activity, mannan endo-1,6-alpha-mannosidase activity, mannose metabolic process, oligosaccharide catabolic process, protein deglycosylation.

Gene ID:

MAN2B2

Uniprot

Q9Y2E5

Synonyms:

Epididymis-specific alpha-mannosidase (EC 3.2.1.24) (Mannosidase alpha class 2B member 2), MAN2B2, KIAA0935

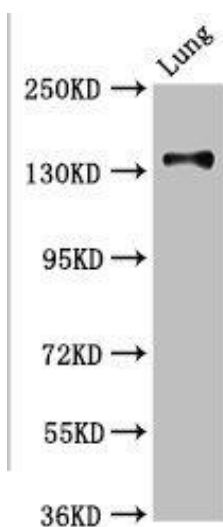
Immunogen:

Recombinant Human Epididymis-specific alpha-mannosidase protein (347-523AA).

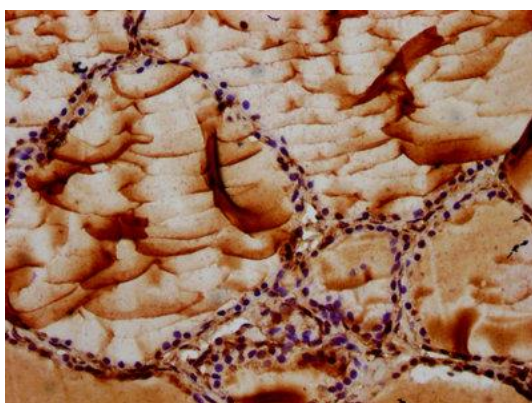
Storage:

Preservative: 0.03% Proclin 300. Constituents: 50% Glycerol, 0.01M PBS, pH 7.4

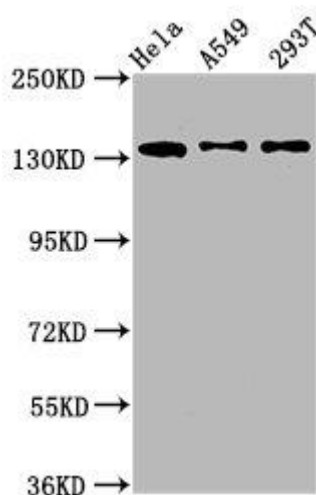
Product Images



Western Blot. Positive WB detected in: Rat kidney tissue. All lanes: MAN2B2 antibody at 3.4µg/ml. Secondary. Goat polyclonal to rabbit IgG at 1/50000 dilution. Predicted band size: 114, 108 kDa. Observed band size: 114 kDa.



IHC image of PAC056250 diluted at 1:100 and staining in paraffin-embedded human thyroid tissue performed on a Leica Bond™ system. After dewaxing and hydration, antigen retrieval was mediated by high pressure in a citrate buffer (pH 6.0). Section was blocked with 10% normal goat serum 30min at RT. Then primary antibody (1% BSA) was incubated at 4°C overnight. The primary is detected by a biotinylated secondary antibody and visualized using an HRP conjugated SP system.



Western Blot. Positive WB detected in: HeLa whole cell lysate, A549 whole cell lysate, 293T whole cell lysate. All lanes: MAN2B2 antibody at 1.4µg/ml. Secondary. Goat polyclonal to rabbit IgG at 1/50000 dilution. Predicted band size: 114, 108 kDa. Observed band size: 135 kDa.