

ECT2 Antibody



PACO56222

Product Information

Size:

50ug

Reactivity:

Human

Source:

Rabbit

Isotype:

IgG

Applications:

ELISA, WB, IHC, IP

Recommended dilutions:

ELISA:1:2000-1:10000, WB:1:500-1:5000,
IHC:1:500-1:1000, IP:1:200-1:2000

Protein Background:

Gene ID:

ECT2

Uniprot

Q9H8V3

Synonyms:

Protein ECT2 (Epithelial cell-transforming sequence 2 oncogene), ECT2

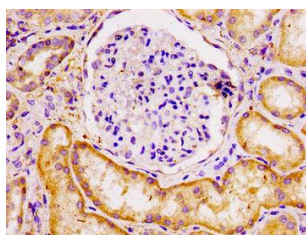
Immunogen:

Recombinant Human Protein ECT2 protein (283-453AA).

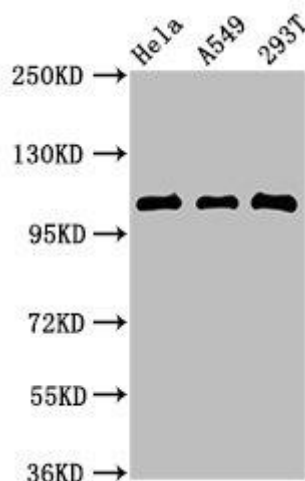
Storage:

Preservative: 0.03% Proclin 300. Constituents: 50% Glycerol, 0.01M PBS, pH 7.4

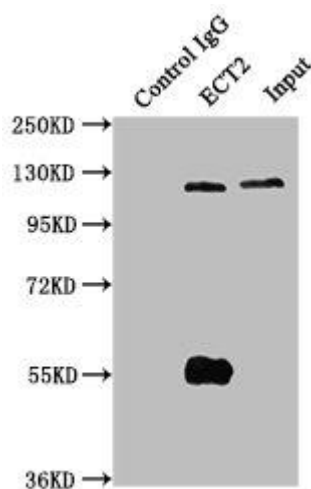
Product Images



IHC image of PACO56222 diluted at 1:100 and staining in paraffin-embedded human kidney tissue performed on a Leica Bond™ system. After dewaxing and hydration, antigen retrieval was mediated by high pressure in a citrate buffer (pH 6.0). Section was blocked with 10% normal goat serum 30min at RT. Then primary antibody (1% BSA) was incubated at 4°C overnight. The primary is detected by a biotinylated secondary antibody and visualized using an HRP conjugated SP system.



Western Blot. Positive WB detected in: HeLa whole cell lysate, A549 whole cell lysate, 293T whole cell lysate. All lanes: ECT2 antibody at 2.7µg/ml. Secondary. Goat polyclonal to rabbit IgG at 1/50000 dilution. Predicted band size: 104, 100, 109, 101 kDa. Observed band size: 104 kDa.



Immunoprecipitating ECT2 in HeLa whole cell lysate. Lane 1: Rabbit control IgG instead of PACO56222 in HeLa whole cell lysate. For western blotting, a HRP-conjugated Protein G antibody was used as the secondary antibody (1/50000). Lane 2: PACO56222 (6µg) + HeLa whole cell lysate (1mg). Lane 3: HeLa whole cell lysate (20µg).