

CNNM3 Antibody



PACO56058

Product Information

Size:

50ug

Reactivity:

Human

Source:

Rabbit

Isotype:

IgG

Applications:

ELISA, WB, IHC, IF

Recommended dilutions:

ELISA:1:2000-1:10000, WB:1:1000-1:5000,
IHC:1:200-1:500, IF:1:50-1:200

Protein Background:

Probable metal transporter.

Gene ID:

CNNM3

Uniprot

Q8NE01

Synonyms:

Metal transporter CNNM3 (Ancient conserved domain-containing protein 3) (Cyclin-M3), CNNM3, ACDP3

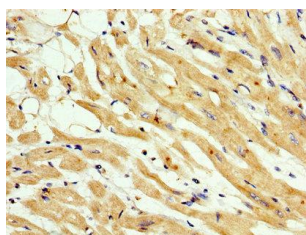
Immunogen:

Recombinant Human Metal transporter CNNM3 protein (358-645AA).

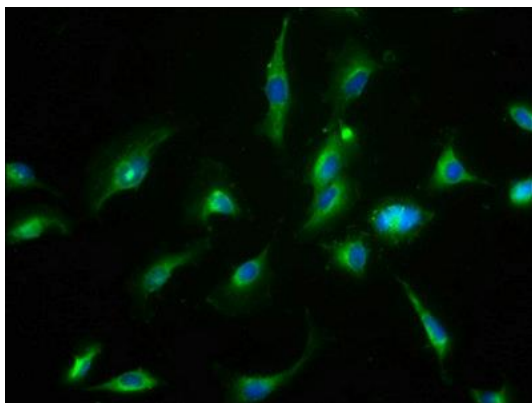
Storage:

Preservative: 0.03% Proclin 300. Constituents: 50% Glycerol, 0.01M PBS, pH 7.4

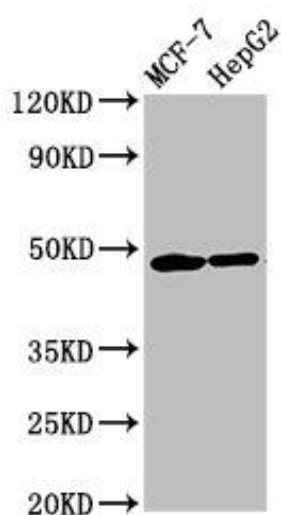
Product Images



IHC image of PACO56058 diluted at 1:200 and staining in paraffin-embedded human heart tissue performed on a Leica Bond™ system. After dewaxing and hydration, antigen retrieval was mediated by high pressure in a citrate buffer (pH 6.0). Section was blocked with 10% normal goat serum 30min at RT. Then primary antibody (1% BSA) was incubated at 4°C overnight. The primary is detected by a biotinylated secondary antibody and visualized using an HRP conjugated SP system.



Immunofluorescence staining of U251 cells with PACO56058 at 1:66, counter-stained with DAPI. The cells were fixed in 4% formaldehyde, permeabilized using 0.2% Triton X-100 and blocked in 10% normal Goat Serum. The cells were then incubated with the antibody overnight at 4°C. The secondary antibody was Alexa Fluor 488-conjugated AffiniPure Goat Anti-Rabbit IgG(H+L).



Western Blot. Positive WB detected in: MCF-7 whole cell lysate, HepG2 whole cell lysate. All lanes: CNNM3 antibody at 5.6µg/ml. Secondary. Goat polyclonal to rabbit IgG at 1/50000 dilution. Predicted band size: 77, 71, 74 kDa. Observed band size: 48 kDa.