

# EPSTI1 Antibody



PACO56054

---

## Product Information

**Size:**

50ug

**Reactivity:**

Human

**Source:**

Rabbit

**Isotype:**

IgG

**Applications:**

ELISA, WB, IHC

**Recommended dilutions:**

ELISA:1:2000-1:10000, WB:1:500-1:5000,  
IHC:1:200-1:500

**Protein Background:**

**Gene ID:**

EPSTI1

**Uniprot**

Q96J88

**Synonyms:**

Epithelial-stromal interaction protein 1, EPSTI1

**Immunogen:**

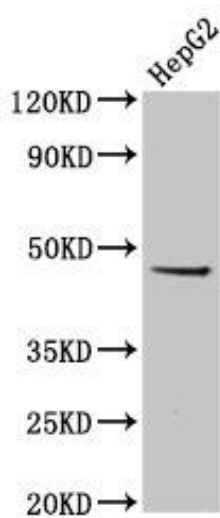
Recombinant Human Epithelial-stromal interaction protein 1 protein (12-56AA).

**Storage:**

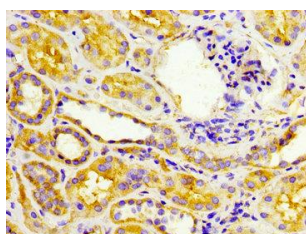
Preservative: 0.03% Proclin 300. Constituents: 50% Glycerol, 0.01M PBS, pH 7.4

## Product Images

---



Western Blot. Positive WB detected in: HepG2 whole cell lysate. All lanes: EPSTI1 antibody at 5µg/ml. Secondary. Goat polyclonal to rabbit IgG at 1/50000 dilution. Predicted band size: 37, 36, 48 kDa. Observed band size: 48 kDa.



IHC image of PAC056054 diluted at 1:300 and staining in paraffin-embedded human kidney tissue performed on a Leica Bond™ system. After dewaxing and hydration, antigen retrieval was mediated by high pressure in a citrate buffer (pH 6.0). Section was blocked with 10% normal goat serum 30min at RT. Then primary antibody (1% BSA) was incubated at 4°C overnight. The primary is detected by a biotinylated secondary antibody and visualized using an HRP conjugated SP system.