

# MSX2 Antibody



PACO55658

---

## Product Information

**Size:**

50ug

**Reactivity:**

Human, Rat

**Source:**

Rabbit

**Isotype:**

IgG

**Applications:**

ELISA, WB, IHC

**Recommended dilutions:**

ELISA:1:2000-1:10000, WB:1:500-1:5000,  
IHC:1:20-1:200

**Protein Background:**

Acts as a transcriptional regulator in bone development. Represses the ALPL promoter activity and antagonizes the stimulatory effect of DLX5 on ALPL expression during osteoblast differentiation. Probable morphogenetic role. May play a role in limb-pattern formation. In osteoblasts, suppresses transcription driven by the osteocalcin FGF response element (OCFRE). Binds to the homeodomain-response element of the ALPL promoter.

**Gene ID:**

MSX2

**Uniprot**

P35548

**Synonyms:**

Homeobox protein MSX-2 (Homeobox protein Hox-8), MSX2, HOX8

**Immunogen:**

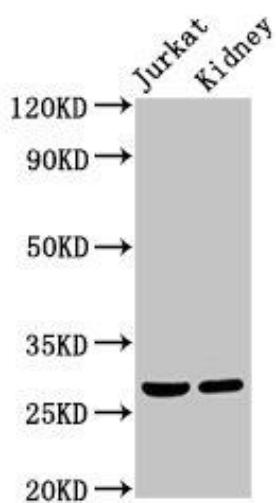
Recombinant Human Homeobox protein MSX-2 protein (50-120AA).

**Storage:**

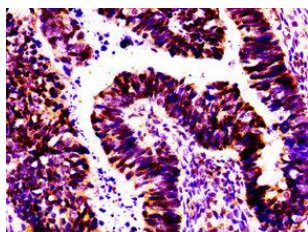
Preservative: 0.03% Proclin 300. Constituents: 50% Glycerol, 0.01M PBS, pH 7.4

## Product Images

---



Western Blot. Positive WB detected in: Jurkat whole cell lysate, Rat kidney tissue. All lanes: MSX2 antibody at 2 $\mu$ g/ml. Secondary. Goat polyclonal to rabbit IgG at 1/50000 dilution. Predicted band size: 29 kDa. Observed band size: 29 kDa.



IHC image of PACO55658 diluted at 1:100 and staining in paraffin-embedded human ovarian cancer performed on a Leica Bond<sup>TM</sup> system. After dewaxing and hydration, antigen retrieval was mediated by high pressure in a citrate buffer (pH 6.0). Section was blocked with 10% normal goat serum 30min at RT. Then primary antibody (1% BSA) was incubated at 4 $^{\circ}$ C overnight. The primary is detected by a biotinylated secondary antibody and visualized using an HRP conjugated SP system.