

MST1 Antibody



PACO55650

Product Information

Size:

50ug

Reactivity:

Human

Source:

Rabbit

Isotype:

IgG

Applications:

ELISA, IHC

Recommended dilutions:

ELISA:1:2000-1:10000, IHC:1:200-1:500

Protein Background:

extracellular exosome, extracellular region, extracellular space, receptor tyrosine kinase binding, hepatocyte growth factor receptor signaling pathway, negative regulation of gluconeogenesis, regulation of cAMP-dependent protein kinase activity.

Gene ID:

MST1

Uniprot

P26927

Synonyms:

Hepatocyte growth factor-like protein (Macrophage stimulatory protein) (Macrophage-stimulating protein) (MSP) [Cleaved into: Hepatocyte growth factor-like protein alpha chain; Hepatocyte growth factor-like protein beta chain], MST1, D3F15S2 DNF15S2 HGFL

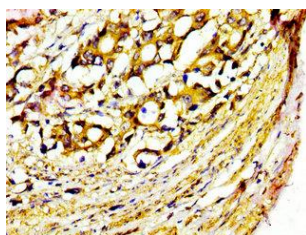
Immunogen:

Recombinant Human Hepatocyte growth factor-like protein (363-465AA).

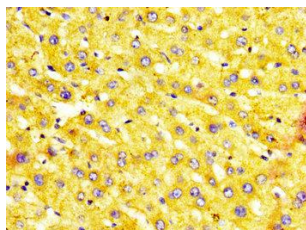
Storage:

Preservative: 0.03% Proclin 300. Constituents: 50% Glycerol, 0.01M PBS, pH 7.4

Product Images



IHC image of PACO55650 diluted at 1:400 and staining in paraffin-embedded human gastric cancer performed on a Leica Bond™ system. After dewaxing and hydration, antigen retrieval was mediated by high pressure in a citrate buffer (pH 6.0). Section was blocked with 10% normal goat serum 30min at RT. Then primary antibody (1% BSA) was incubated at 4°C overnight. The primary is detected by a biotinylated secondary antibody and visualized using an HRP conjugated SP system.



IHC image of PACO55650 diluted at 1:400 and staining in paraffin-embedded human liver tissue performed on a Leica Bond™ system. After dewaxing and hydration, antigen retrieval was mediated by high pressure in a citrate buffer (pH 6.0). Section was blocked with 10% normal goat serum 30min at RT. Then primary antibody (1% BSA) was incubated at 4°C overnight. The primary is detected by a biotinylated secondary antibody and visualized using an HRP conjugated SP system.