

# KCNAB1 Antibody



PACO55574

---

## Product Information

**Size:**

50ug

**Reactivity:**

Human, Mouse

**Source:**

Rabbit

**Isotype:**

IgG

**Applications:**

ELISA, WB, IHC, IF

**Recommended dilutions:**

ELISA:1:2000-1:10000, WB:1:500-1:5000,  
IHC:1:200-1:500, IF:1:50-1:200

**Protein Background:****Gene ID:**

KCNAB1

**Uniprot**

Q14722

**Synonyms:**

Voltage-gated potassium channel subunit beta-1 (EC 1.1.1) (K(+)) channel subunit beta-1) (Kv-beta-1), KCNAB1, KCNA1B

**Immunogen:**

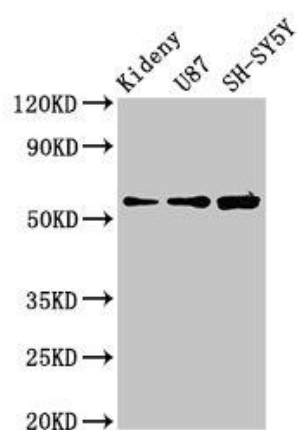
Recombinant Human Voltage-gated potassium channel subunit beta-1 protein (287-401AA).

**Storage:**

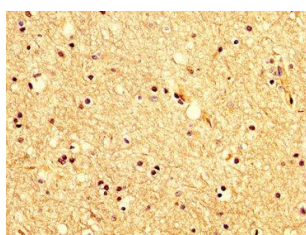
Preservative: 0.03% Proclin 300. Constituents: 50% Glycerol, 0.01M PBS, pH 7.4

## Product Images

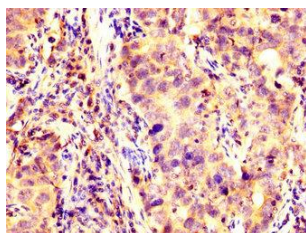
---



Western Blot. Positive WB detected in: Mouse kidney tissue, U87 whole cell lysate, SH-SY5Y whole cell lysate. All lanes: KCNAB1 antibody at 3.9 $\mu$ g/ml. Secondary. Goat polyclonal to rabbit IgG at 1/50000 dilution. Predicted band size: 47, 45, 46 kDa. Observed band size: 60 kDa.



IHC image of PACO55574 diluted at 1:200 and staining in paraffin-embedded human brain tissue performed on a Leica Bond<sup>TM</sup> system. After dewaxing and hydration, antigen retrieval was mediated by high pressure in a citrate buffer (pH 6.0). Section was blocked with 10% normal goat serum 30min at RT. Then primary antibody (1% BSA) was incubated at 4°C overnight. The primary is detected by a biotinylated secondary antibody and visualized using an HRP conjugated SP system.



IHC image of PACO55574 diluted at 1:200 and staining in paraffin-embedded human pancreatic cancer performed on a Leica Bond<sup>TM</sup> system. After dewaxing and hydration, antigen retrieval was mediated by high pressure in a citrate buffer (pH 6.0). Section was blocked with 10% normal goat serum 30min at RT. Then primary antibody (1% BSA) was incubated at 4°C overnight. The primary is detected by a biotinylated secondary antibody and visualized using an HRP conjugated SP system.