

# EXOSC10 Antibody



PACO55482

---

## Product Information

**Size:**

50ug

**Reactivity:**

Human

**Source:**

Rabbit

**Isotype:**

IgG

**Applications:**

ELISA, IHC

**Recommended dilutions:**

ELISA:1:2000-1:10000, IHC:1:200-1:500

**Protein Background:****Gene ID:**

EXOSC10

**Uniprot**

Q01780

**Synonyms:**

Exosome component 10 (EC 3.1.13) (Autoantigen PM/Scl 2) (P100 polymyositis-scleroderma overlap syndrome-associated autoantigen) (Polymyositis/scleroderma autoantigen 100 kDa) (PM/Scl-100) (Polymyositis/scleroderma autoantigen 2), EXOSC10, PMSCL PMSCL2 RRP6

**Immunogen:**

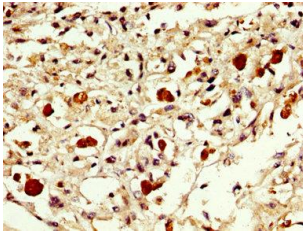
Recombinant Human Exosome component 10 protein (587-762AA).

**Storage:**

Preservative: 0.03% Proclin 300. Constituents: 50% Glycerol, 0.01M PBS, pH 7.4

## Product Images

---



IHC image of PACO55482 diluted at 1:300 and staining in paraffin-embedded human melanoma performed on a Leica Bond™ system. After dewaxing and hydration, antigen retrieval was mediated by high pressure in a citrate buffer (pH 6.0). Section was blocked with 10% normal goat serum 30min at RT. Then primary antibody (1% BSA) was incubated at 4°C overnight. The primary is detected by a biotinylated secondary antibody and visualized using an HRP conjugated SP system.