

Product Information

Size:

50ug

Reactivity:

Human

Source:

Rabbit

Isotype:

IgG

Applications:

ELISA, IF

Recommended dilutions:

ELISA:1:2000-1:10000, IF:1:50-1:200

Protein Background:

Death-promoting transcriptional repressor. May be involved in cyclin-D1/CCND1 mRNA stability through the SNARP complex which associates with both the 3'end of the CCND1 gene and its mRNA.

Gene ID:

BCLAF1

Uniprot

Q9NYF8

Synonyms:

Bcl-2-associated transcription factor 1 (Btf) (BCLAF1 and THRAP3 family member 1), BCLAF1, BTF KIAA0164

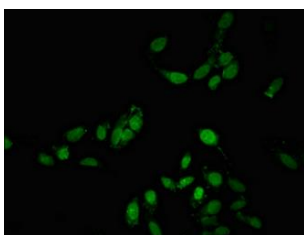
Immunogen:

Recombinant Human Bcl-2-associated transcription factor 1 protein (218-407AA).

Storage:

Preservative: 0.03% Proclin 300. Constituents: 50% Glycerol, 0.01M PBS, pH 7.4

Product Images



Immunofluorescent analysis of HeLa cells using PACO55334 at dilution of 1:100 and Alexa Fluor 488-conjugated AffiniPure Goat Anti-Rabbit IgG(H+L).