

PACO55158

---

## Product Information

**Size:**

50ug

**Reactivity:**

Human

**Source:**

Rabbit

**Isotype:**

IgG

**Applications:**

ELISA, WB, IF

**Recommended dilutions:**

ELISA:1:2000-1:10000, WB:1:500-1:5000,  
IF:1:50-1:200

**Protein Background:**

Component of a cell-surface receptor complex that mediates cell-cell interactions between muscle precursor cells. Promotes differentiation of myogenic cells.

**Gene ID:**

CDON

**Uniprot**

Q4KMG0

**Synonyms:**

Cell adhesion molecule-related/down-regulated by oncogenes, CDON, CDO

**Immunogen:**

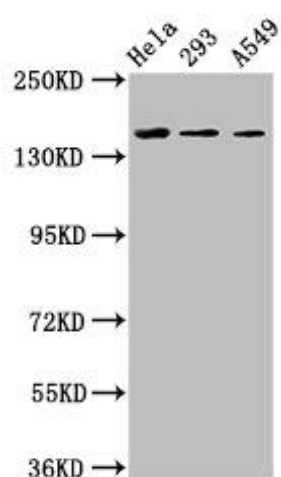
Recombinant Human Cell adhesion molecule-related/down-regulated by oncogenes protein (1095-1211AA).

**Storage:**

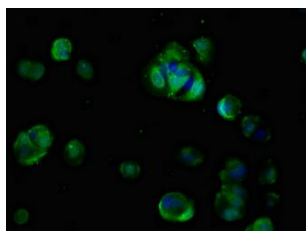
Preservative: 0.03% Proclin 300. Constituents: 50% Glycerol, 0.01M PBS, pH 7.4

## Product Images

---



Western Blot. Positive WB detected in: HeLa whole cell lysate, 293 whole cell lysate, A549 whole cell lysate. All lanes: CDON antibody at 3.4 $\mu$ g/ml. Secondary. Goat polyclonal to rabbit IgG at 1/50000 dilution. Predicted band size: 140, 137 kDa. Observed band size: 140 kDa.



Immunofluorescent analysis of MCF-7 cells using PACO55158 at dilution of 1:100 and Alexa Fluor 488-conjugated AffiniPure Goat Anti-Rabbit IgG(H+L).