

PACO55126

Product Information

Size:

50ug

Reactivity:

Human

Source:

Rabbit

Isotype:

IgG

Applications:

ELISA, IHC, IF

Recommended dilutions:

ELISA:1:2000-1:10000, IHC:1:20-1:200,
IF:1:50-1:200

Protein Background:

Pore-forming (alpha) subunit of voltage-gated inwardly rectifying potassium channel. Channel properties are modulated by cAMP and subunit assembly. Mediates the rapidly activating component of the delayed rectifying potassium current in heart (IKr).

Gene ID:

KCNH2

Uniprot

Q12809

Synonyms:

Potassium voltage-gated channel subfamily H member 2 (Eag homolog) (Ether-a-go-go-related gene potassium channel 1) (ERG-1) (Eag-related protein 1) (Ether-a-go-go-related protein 1) (H-ERG) (hERG-1) (hERG1) (Voltage-gated potassium channel subunit Kv11.1), KCNH2, ERG ERG1 HERG

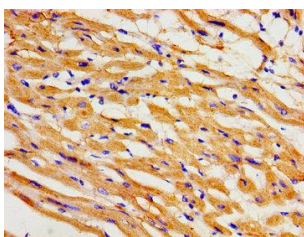
Immunogen:

Recombinant Human Potassium voltage-gated channel subfamily H member 2 protein (894-1137AA).

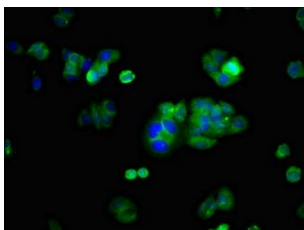
Storage:

Preservative: 0.03% Proclin 300. Constituents: 50% Glycerol, 0.01M PBS, pH 7.4

Product Images



Immunohistochemistry of paraffin-embedded human heart tissue using PACO55126 at dilution of 1:100.



Immunofluorescent analysis of HepG2 cells using PACO55126 at dilution of 1:100 and Alexa Fluor 488-conjugated AffiniPure Goat Anti-Rabbit IgG(H+L).