

ADGRB2 Antibody



PACO55086

Product Information

Size:

50ug

Reactivity:

Human, Rat

Source:

Rabbit

Isotype:

IgG

Applications:

ELISA, WB, IF

Recommended dilutions:

ELISA:1:2000-1:10000, WB:1:500-1:5000,
IF:1:50-1:200

Protein Background:

Orphan receptor involved in cell adhesion and probably in cell-cell interactions. Activates NFAT signaling pathway probably via a G-protein dependent pathway. Might be involved in angiogenesis inhibition.

Gene ID:

ADGRB2

Uniprot

O60241

Synonyms:

Adhesion G protein-coupled receptor B2 (Brain-specific angiogenesis inhibitor 2), ADGRB2, BAI2

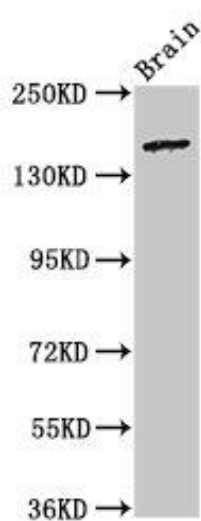
Immunogen:

Recombinant Human Adhesion G protein-coupled receptor B2 protein (1371-1545AA).

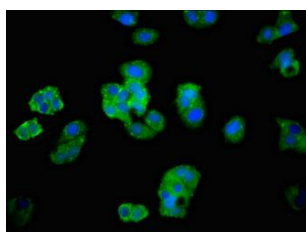
Storage:

Preservative: 0.03% Proclin 300. Constituents: 50% Glycerol, 0.01M PBS, pH 7.4

Product Images



Western Blot. Positive WB detected in: Rat brain tissue. All lanes: ADGRB2 antibody at 3.2 μ g/ml. Secondary. Goat polyclonal to rabbit IgG at 1/50000 dilution. Predicted band size: 173, 172, 170 kDa. Observed band size: 173 kDa.



Immunofluorescent analysis of HepG2 cells using PACO55086 at dilution of 1:100 and Alexa Fluor 488-conjugated AffiniPure Goat Anti-Rabbit IgG(H+L).