

## Product Information

**Size:**

50ug

**Reactivity:**

Human

**Source:**

Rabbit

**Isotype:**

IgG

**Applications:**

ELISA, IHC

**Recommended dilutions:**

ELISA:1:2000-1:10000, IHC:1:20-1:200

**Protein Background:**

Secreted growth factor that induces neurite outgrowth and which is mitogenic for fibroblasts, epithelial, and endothelial cells. Binds anaplastic lymphoma kinase (ALK) which induces MAPK pathway activation, an important step in the anti-apoptotic signaling of PTN and regulation of cell proliferation. Binds to cell-surface target proteins via their chondroitin sulfate groups. Down-regulates PTPRZ1 activity.

**Gene ID:**

PTN

**Uniprot**

P21246

**Synonyms:**

Pleiotrophin (PTN) (Heparin-binding brain mitogen) (HBBM) (Heparin-binding growth factor 8) (HBGF-8) (Heparin-binding growth-associated molecule) (HB-GAM) (Heparin-binding neurite outgrowth-promoting factor 1) (HBNF-1) (Osteoblast-specific factor 1) (OSF-1), PTN, HBNF1 NEGF1

**Immunogen:**

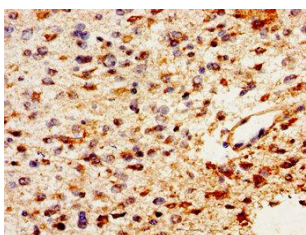
Recombinant Human Pleiotrophin protein (33-168AA).

**Storage:**

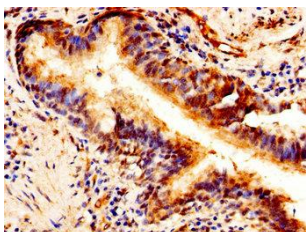
Preservative: 0.03% Proclin 300. Constituents: 50% Glycerol, 0.01M PBS, pH 7.4

## Product Images

---



Immunohistochemistry of paraffin-embedded human glioma using PACO55062 at dilution of 1:100.



Immunohistochemistry of paraffin-embedded human lung cancer using PACO55062 at dilution of 1:100.