

Product Information

Size:

50ug

Reactivity:

Human

Source:

Rabbit

Isotype:

IgG

Applications:

ELISA, WB, IHC, IF

Recommended dilutions:

ELISA:1:2000-1:10000, WB:1:500-1:5000,
IHC:1:20-1:200, IF:1:50-1:200

Protein Background:

Anti-proliferative protein; the function is mediated by association with deadenylase subunits of the CCR4-NOT complex. Mediates CPEB3-accelerated mRNA deadenylation by binding to CPEB3 and recruiting CNOT7 which leads to target mRNA deadenylation and decay.

Gene ID:

TOB1

Uniprot

P50616

Synonyms:

Protein Tob1 (Transducer of erbB-2 1), TOB1, TOB TROB1

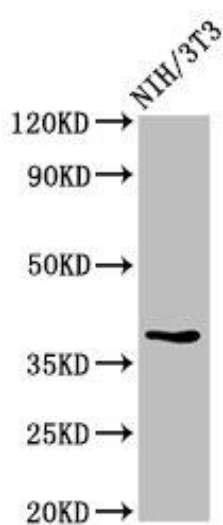
Immunogen:

Recombinant Human Protein Tob1 protein (42-175AA).

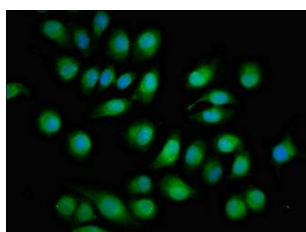
Storage:

Preservative: 0.03% Proclin 300. Constituents: 50% Glycerol, 0.01M PBS, pH 7.4

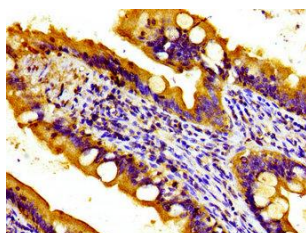
Product Images



Western Blot. Positive WB detected in: NIH/3T3 whole cell lysate. All lanes: TOB1 antibody at 2.7 μ g/ml. Secondary. Goat polyclonal to rabbit IgG at 1/50000 dilution. Predicted band size: 39 kDa. Observed band size: 39 kDa.



Immunofluorescent analysis of A549 cells using PACO55026 at dilution of 1:100 and Alexa Fluor 488-conjugated AffiniPure Goat Anti-Rabbit IgG(H+L).



Immunohistochemistry of paraffin-embedded human small intestine tissue using PACO55026 at dilution of 1:100.