

PACO55002

Product Information

Size:

50ug

Reactivity:

Human, Rat, Mouse

Source:

Rabbit

Isotype:

IgG

Applications:

ELISA, WB, IHC, IF

Recommended dilutions:

ELISA:1:2000-1:10000, WB:1:500-1:5000,
IHC:1:20-1:200, IF:1:50-1:200

Protein Background:

Transports L-glutamate and also L- and D-aspartate. Essential for terminating the postsynaptic action of glutamate by rapidly removing released glutamate from the synaptic cleft. Acts as a symport by cotransporting sodium.

Gene ID:

SLC1A2

Uniprot

P43004

Synonyms:

Excitatory amino acid, transporter 2 (Glutamate/aspartate transporter II) (Sodium-dependent glutamate/aspartate transporter 2) (Solute carrier family 1 member 2), SLC1A2, EAAT2, GLT1

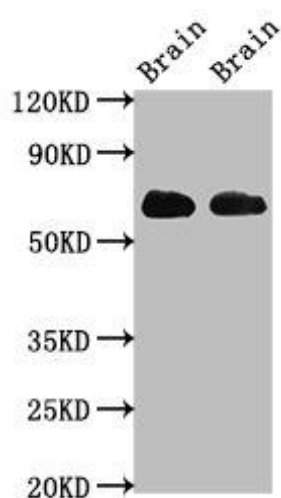
Immunogen:

Recombinant Human Excitatory amino acid, transporter 2 protein (460-574AA).

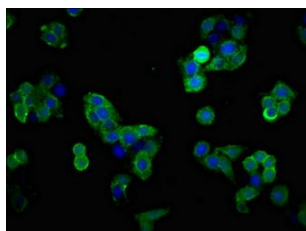
Storage:

Preservative: 0.03% Proclin 300. Constituents: 50% Glycerol, 0.01M PBS, pH 7.4

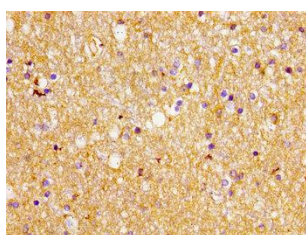
Product Images



Western Blot. Positive WB detected in: Rat brain tissue, Mouse brain tissue. All lanes: SLC1A2 antibody at 3.2 μ g/ml. Secondary. Goat polyclonal to rabbit IgG at 1/50000 dilution. Predicted band size: 63, 62 kDa. Observed band size: 63 kDa.



Immunofluorescent analysis of PC-3 cells using PACO55002 at dilution of 1:100 and Alexa Fluor 488-conjugated AffiniPure Goat Anti-Rabbit IgG(H+L).



Immunohistochemistry of paraffin-embedded human brain tissue using PACO55002 at dilution of 1:100.