

Product Information

Size:

50ug

Reactivity:

Human

Source:

Rabbit

Isotype:

IgG

Applications:

ELISA, IHC, IF

Recommended dilutions:

ELISA:1:2000-1:10000, IHC:1:20-1:200,
IF:1:50-1:200

Protein Background:

Regulates G protein-coupled receptor signaling cascades, including signaling downstream of the N-formylpeptide chemoattractant receptors and leukotriene receptors. Inhibits B cell chemotaxis toward CXCL12. Inhibits signal transduction by increasing the GTPase activity of G protein alpha subunits thereby driving them into their inactive GDP-bound form.

Gene ID:

RGS1

Uniprot

Q08116

Synonyms:

Regulator of G-protein signaling 1 (RGS1) (B-cell activation protein BL34) (Early response protein 1R20), RGS1, 1R20 BL34 IER1

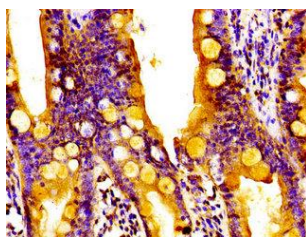
Immunogen:

Recombinant Human Regulator of G-protein signaling 1 protein (14-209AA).

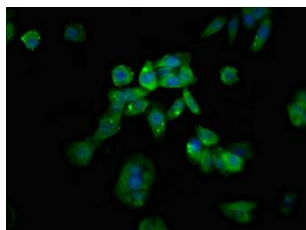
Storage:

Preservative: 0.03% Proclin 300. Constituents: 50% Glycerol, 0.01M PBS, pH 7.4

Product Images



Immunohistochemistry of paraffin-embedded human small intestine tissue using PACO54978 at dilution of 1:100.



Immunofluorescent analysis of HepG2 cells using PACO54978 at dilution of 1:100 and Alexa Fluor 488-conjugated AffiniPure Goat Anti-Rabbit IgG(H+L).