

Product Information

Size:

50ug

Reactivity:

Human

Source:

Rabbit

Isotype:

IgG

Applications:

ELISA, IF

Recommended dilutions:

ELISA:1:2000-1:10000, IF:1:50-1:200

Protein Background:

G-protein coupled receptor for the tridecapeptide neurotensin (NTS). Signaling is effected via G proteins that activate a phosphatidylinositol-calcium second messenger system. Signaling leads to the activation of downstream MAP kinases and protects cells against apoptosis.

Gene ID:

NTSR1

Uniprot

P30989

Synonyms:

Neurotensin receptor type 1 (NT-R-1) (NTR1) (High-affinity levocabastine-insensitive neurotensin receptor) (NTRH), NTSR1, NTRR

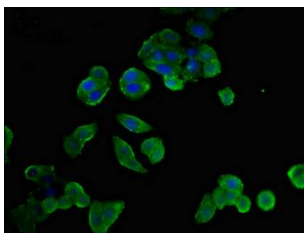
Immunogen:

Recombinant Human Neurotensin receptor type 1 protein (1-67AA).

Storage:

Preservative: 0.03% Proclin 300. Constituents: 50% Glycerol, 0.01M PBS, pH 7.4

Product Images



Immunofluorescent analysis of PC-3 cells using PACO54918 at dilution of 1:100 and Alexa Fluor 488-conjugated AffiniPure Goat Anti-Rabbit IgG(H+L).