

Product Information

Size:

50ug

Reactivity:

Human

Source:

Rabbit

Isotype:

IgG

Applications:

ELISA, IHC

Recommended dilutions:

ELISA:1:2000-1:10000, IHC:1:20-1:200

Protein Background:

Receptor for the natriuretic peptide hormones, binding with similar affinities atrial natriuretic peptide NPPA/ANP, brain natriuretic peptide NPPB/BNP, and C-type natriuretic peptide NPPC/CNP. May function as a clearance receptor for NPPA, NPPB and NPPC, regulating their local concentrations and effects. May regulate diuresis, blood pressure and skeletal development. Does not have guanylate cyclase activity.

Gene ID:

NPR3

Uniprot

P17342

Synonyms:

Atrial natriuretic peptide receptor 3 (Atrial natriuretic peptide clearance receptor) (Atrial natriuretic peptide receptor type C) (ANP-C) (ANPR-C) (NPR-C), NPR3, ANPRC C5orf23 NPRC

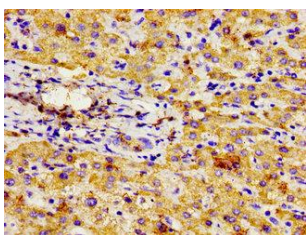
Immunogen:

Recombinant Human Atrial natriuretic peptide receptor 3 protein (36-127AA).

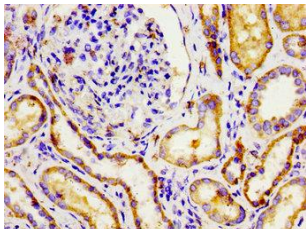
Storage:

Preservative: 0.03% Proclin 300. Constituents: 50% Glycerol, 0.01M PBS, pH 7.4

Product Images



Immunohistochemistry of paraffin-embedded human liver cancer using PACO54906 at dilution of 1:100.



Immunohistochemistry of paraffin-embedded human kidney tissue using PACO54906 at dilution of 1:100.