

PACO54842

Product Information

Size:

50ug

Reactivity:

Human

Source:

Rabbit

Isotype:

IgG

Applications:

ELISA, WB, IHC, IF

Recommended dilutions:

ELISA:1:2000-1:10000, WB:1:500-1:5000,
IHC:1:20-1:200, IF:1:50-1:200

Protein Background:

Part of the insoluble cornified cell envelope (CE) of stratified squamous epithelia.

Gene ID:

IVL

Uniprot

P07476

Synonyms:

Involucrin, IVL

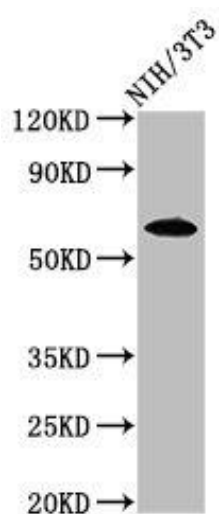
Immunogen:

Recombinant Human Involucrin protein (24-118AA).

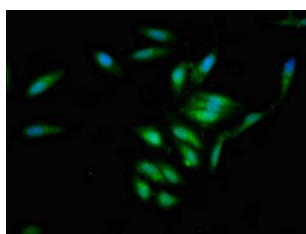
Storage:

Preservative: 0.03% Proclin 300. Constituents: 50% Glycerol, 0.01M PBS, pH 7.4

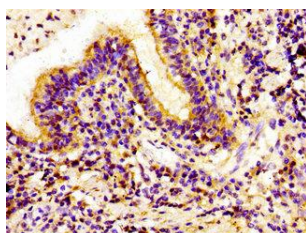
Product Images



Western Blot. Positive WB detected in: NIH/3T3 whole cell lysate. All lanes: IVL antibody at 3.2µg/ml. Secondary: Goat polyclonal to rabbit IgG at 1/50000 dilution. Predicted band size: 69 kDa. Observed band size: 69 kDa.



Immunofluorescent analysis of HeLa cells using PACO54842 at dilution of 1:100 and Alexa Fluor 488-conjugated AffiniPure Goat Anti-Rabbit IgG(H+L).



Immunohistochemistry of paraffin-embedded human lung cancer using PACO54842 at dilution of 1:100.