

PACO54822

Product Information

Size:

50ug

Reactivity:

Human

Source:

Rabbit

Isotype:

IgG

Applications:

ELISA, IHC

Recommended dilutions:

ELISA:1:2000-1:10000, IHC:1:20-1:200

Protein Background:

IGF-binding proteins prolong the half-life of the IGFs and have been shown to either inhibit or stimulate the growth promoting effects of the IGFs on cell culture. They alter the interaction of IGFs with their cell surface receptors.

Gene ID:

IGFBP6

Uniprot

P24592

Synonyms:

Insulin-like growth factor-binding protein 6 (IBP-6) (IGF-binding protein 6) (IGFBP-6), IGFBP6, IBP6

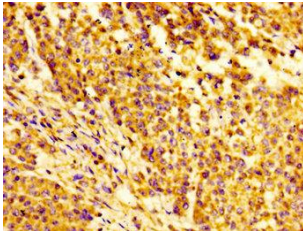
Immunogen:

Recombinant Human Insulin-like growth factor-binding protein 6 protein (32-161AA).

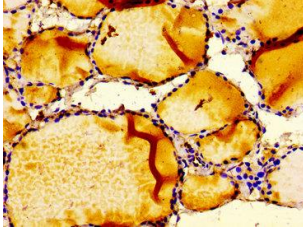
Storage:

Preservative: 0.03% Proclin 300. Constituents: 50% Glycerol, 0.01M PBS, pH 7.4

Product Images



Immunohistochemistry of paraffin-embedded human colon cancer using PACO54822 at dilution of 1:100.



Immunohistochemistry of paraffin-embedded human thyroid tissue using PACO54822 at dilution of 1:100.