

PACO54730

Product Information

Size:

50ug

Reactivity:

Human

Source:

Rabbit

Isotype:

IgG

Applications:

ELISA, IHC, IF

Recommended dilutions:

ELISA:1:2000-1:10000, IHC:1:20-1:200,
IF:1:50-1:200

Protein Background:

Cytochromes P450 are a group of heme-thiolate monooxygenases. In liver microsomes, this enzyme is involved in an NADPH-dependent electron transport pathway. It oxidizes a variety of structurally unrelated compounds, including steroids, fatty acid, , and xenobiotics. Acts as a 1,4-cineole 2-exo-monooxygenase.

Gene ID:

CYP2B6

Uniprot

P20813

Synonyms:

Cytochrome P450 2B6 (EC 1.14.13) (1,4-cineole 2-exo-monooxygenase) (CYP11B6) (Cytochrome P450 I1B1), CYP2B6

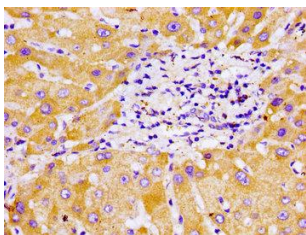
Immunogen:

Recombinant Human Cytochrome P450 2B6 protein (250-343AA).

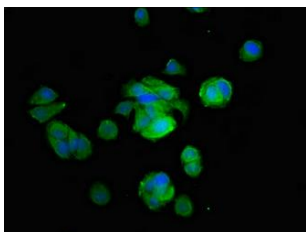
Storage:

Preservative: 0.03% Proclin 300. Constituents: 50% Glycerol, 0.01M PBS, pH 7.4

Product Images



Immunohistochemistry of paraffin-embedded human liver tissue using PACO54730 at dilution of 1:100.



Immunofluorescent analysis of MCF-7 cells using PACO54730 at dilution of 1:100 and Alexa Fluor 488-conjugated AffiniPure Goat Anti-Rabbit IgG(H+L).