

PACO54714

Product Information

Size:

50ug

Reactivity:

Human

Source:

Rabbit

Isotype:

IgG

Applications:

ELISA, IHC, IF

Recommended dilutions:

ELISA:1:2000-1:10000, IHC:1:20-1:200,
IF:1:50-1:200

Protein Background:

Receptor for the chemoattractant adipokine chemerin/RARRES2 and for the omega-3 fatty acid, derived molecule resolvin E1. Interaction with RARRES2 induces activation of intracellular signaling molecules, such as SKY, MAPK1/3 (ERK1/2), MAPK14/P38MAPK and PI3K leading to multifunctional effects, like, reduction of immune responses, enhancing of adipogenesis and angiogenesis. Resolvin E1 down-regulates cytokine production in macrophages by reducing the activation of MAPK1/3 (ERK1/2) and NF-kappa-B. Positively regulates adipogenesis and adipocyte metabolism. Acts as a coreceptor for several SIV strains (SIVMAC316, SIVMAC239, SIVMAC17E-FR and SIVSM62A), as well as a primary HIV-1 strain (92UG024-2).

Gene ID:

CMKLR1

Uniprot

Q99788

Synonyms:

Chemokine-like receptor 1 (G-protein coupled receptor ChemR23) (G-protein coupled receptor DEZ), CMKLR1, CHEMR23 DEZ

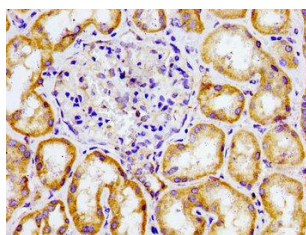
Immunogen:

Recombinant Human Chemokine-like receptor 1 protein (321-373AA).

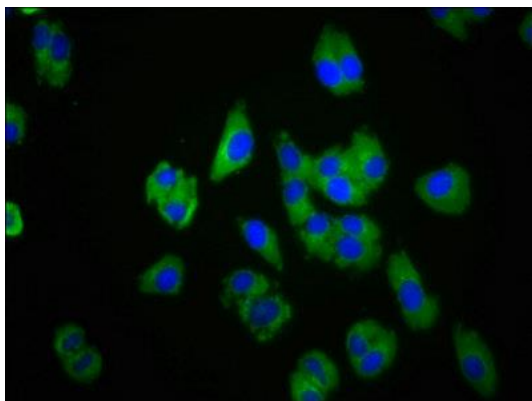
Storage:

Preservative: 0.03% Proclin 300. Constituents: 50% Glycerol, 0.01M PBS, pH 7.4

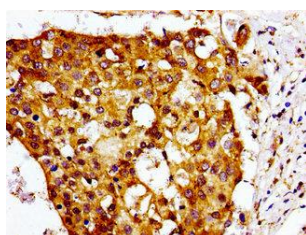
Product Images



Immunohistochemistry of paraffin-embedded human kidney tissue using PACO54714 at dilution of 1:100.



Immunofluorescence staining of HepG2 cells with PACO54714 at 1:100, counter-stained with DAPI. The cells were fixed in 4% formaldehyde, permeabilized using 0.2% Triton X-100 and blocked in 10% normal Goat Serum. The cells were then incubated with the antibody overnight at 4°C. The secondary antibody was Alexa Fluor 488-conjugated AffiniPure Goat Anti-Rabbit IgG(H+L).



Immunohistochemistry of paraffin-embedded human breast cancer using PACO54714 at dilution of 1:100.