

CLDN6 Antibody



PACO54710

Product Information

Size:

50ug

Reactivity:

Human

Source:

Rabbit

Isotype:

IgG

Applications:

ELISA, IHC, IF

Recommended dilutions:

ELISA:1:2000-1:10000, IHC:1:20-1:200,
IF:1:50-1:200

Protein Background:

Plays a major role in tight junction-specific obliteration of the intercellular space. May act as a coreceptor for HCV entry into hepatic cells.

Gene ID:

CLDN6

Uniprot

P56747

Synonyms:

Claudin-6 (Skullin), CLDN6

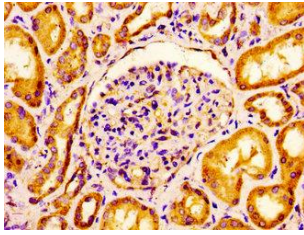
Immunogen:

Recombinant Human Claudin-6 protein (182-220AA).

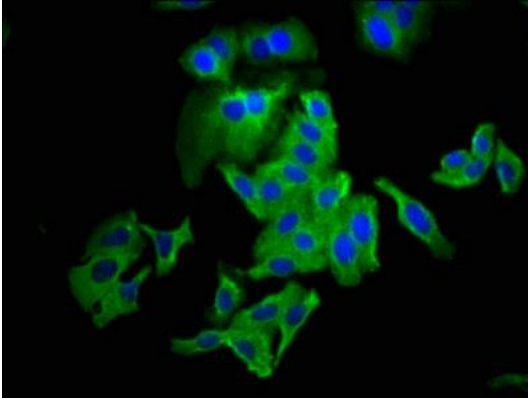
Storage:

Preservative: 0.03% Proclin 300. Constituents: 50% Glycerol, 0.01M PBS, pH 7.4

Product Images



Immunohistochemistry of paraffin-embedded human kidney tissue using PACO54710 at dilution of 1:100.



Immunofluorescence staining of HepG2 cells with PACO54710 at 1:133, counter-stained with DAPI. The cells were fixed in 4% formaldehyde, permeabilized using 0.2% Triton X-100 and blocked in 10% normal Goat Serum. The cells were then incubated with the antibody overnight at 4°C. The secondary antibody was Alexa Fluor 488-conjugated AffiniPure Goat Anti-Rabbit IgG(H+L).