

CKAP4 Antibody



PACO54706

Product Information

Size:

50ug

Reactivity:

Human

Source:

Rabbit

Isotype:

IgG

Applications:

ELISA, WB, IF

Recommended dilutions:

ELISA:1:2000-1:10000, WB:1:500-1:5000,
IF:1:50-1:200

Protein Background:

High-affinity epithelial cell surface receptor for APF.

Gene ID:

CKAP4

Uniprot

Q07065

Synonyms:

Cytoskeleton-associated protein 4 (63-kDa cytoskeleton-linking membrane protein) (Climp-63) (p63), CKAP4

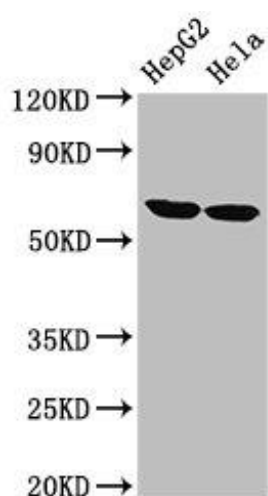
Immunogen:

Recombinant Human Cytoskeleton-associated protein 4 protein (260-394AA).

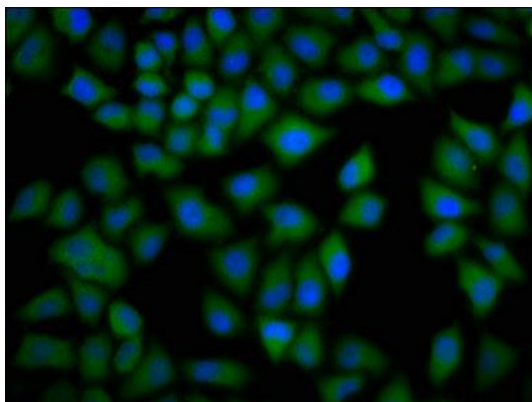
Storage:

Preservative: 0.03% Proclin 300. Constituents: 50% Glycerol, 0.01M PBS, pH 7.4

Product Images



Western Blot. Positive WB detected in: HepG2 whole cell lysate, HeLa whole cell lysate. All lanes: CKAP4 antibody at 2.7 μ g/ml. Secondary: Goat polyclonal to rabbit IgG at 1/50000 dilution. Predicted band size: 67 kDa. Observed band size: 67 kDa.



Immunofluorescence staining of HeLa cells with PACO54706 at 1:133, counter-stained with DAPI. The cells were fixed in 4% formaldehyde, permeabilized using 0.2% Triton X-100 and blocked in 10% normal Goat Serum. The cells were then incubated with the antibody overnight at 4°C. The secondary antibody was Alexa Fluor 488-conjugated AffiniPure Goat Anti-Rabbit IgG(H+L).