

# CCNA1 Antibody



PACO54678

---

## Product Information

**Size:**

50ug

**Reactivity:**

Human

**Source:**

Rabbit

**Isotype:**

IgG

**Applications:**

ELISA, IHC

**Recommended dilutions:**

ELISA:1:2000-1:10000, IHC:1:20-1:200

**Protein Background:**

May be involved in the control of the cell cycle at the G1/S (start) and G2/M (mitosis) transitions. May primarily function in the control of the germline meiotic cell cycle and additionally in the control of mitotic cell cycle in some somatic cells.

**Gene ID:**

CCNA1

**Uniprot**

P78396

**Synonyms:**

Cyclin-A1, CCNA1

**Immunogen:**

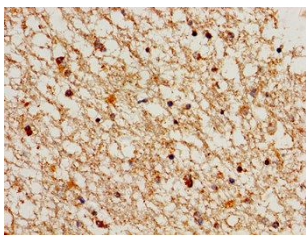
Recombinant Human Cyclin-A1 protein (1-152AA).

**Storage:**

Preservative: 0.03% Proclin 300. Constituents: 50% Glycerol, 0.01M PBS, pH 7.4

## Product Images

---



Immunohistochemistry of paraffin-embedded human brain tissue using PACO54678 at dilution of 1:100.