

PACO54674

---

## Product Information

**Size:**

50ug

**Reactivity:**

Human

**Source:**

Rabbit

**Isotype:**

IgG

**Applications:**

ELISA, WB, IHC

**Recommended dilutions:**

ELISA:1:2000-1:10000, WB:1:500-1:5000,  
IHC:1:20-1:200

**Protein Background:**

Calsequestrin is a high-capacity, moderate affinity, calcium-binding protein and thus acts as an internal calcium store in muscle. Calcium ions are bound by clusters of acid, c residues at the protein surface, especially at the interface between subunits. Can bind around 60 Ca(2+) ions. Regulates the release of luminal Ca(2+) via the calcium release channel RYR2; this plays an important role in triggering muscle contraction. Plays a role in excitation-contraction coupling in the heart and in regulating the rate of heart beats.

**Gene ID:**

CASQ2

**Uniprot**

O14958

**Synonyms:**

Calsequestrin-2 (Calsequestrin, cardiac muscle isoform), CASQ2

**Immunogen:**

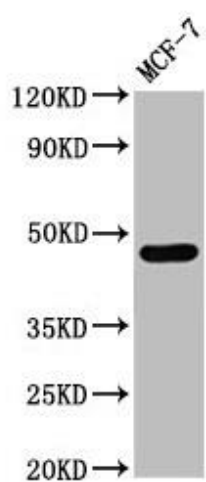
Recombinant Human Calsequestrin-2 protein (219-300AA).

**Storage:**

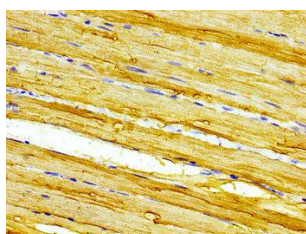
Preservative: 0.03% Proclin 300. Constituents: 50% Glycerol, 0.01M PBS, pH 7.4

## Product Images

---



Western Blot. Positive WB detected in: MCF-7 whole cell lysate. All lanes: CASQ2 antibody at 3 $\mu$ g/ml. Secondary. Goat polyclonal to rabbit IgG at 1/50000 dilution. Predicted band size: 47, 39 kDa. Observed band size: 47 kDa.



Immunohistochemistry of paraffin-embedded human skeletal muscle tissue using PACO54674 at dilution of 1:100.