

# A1BG Antibody



PACO54598

---

## Product Information

**Size:**

50ug

**Reactivity:**

Human

**Source:**

Rabbit

**Isotype:**

IgG

**Applications:**

ELISA, IHC

**Recommended dilutions:**

ELISA:1:2000-1:10000, IHC:1:20-1:200

**Protein Background:**

blood microparticle, extracellular exosome, extracellular region, extracellular space, ficolin-1-rich granule lumen, platelet alpha granule lumen, secretory granule lumen, neutrophil degranulation, platelet degranulation.

**Gene ID:**

A1BG

**Uniprot**

P04217

**Synonyms:**

Alpha-1B-glycoprotein (Alpha-1-B glycoprotein), A1BG

**Immunogen:**

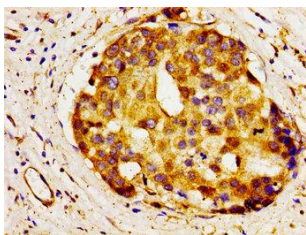
Recombinant Human Alpha-1B-glycoprotein protein (284-408AA).

**Storage:**

Preservative: 0.03% Proclin 300. Constituents: 50% Glycerol, 0.01M PBS, pH 7.4

## Product Images

---



Immunohistochemistry of paraffin-embedded human breast cancer using PACO54598 at dilution of 1:100.