

PACSIN3 Antibody



PACO54594

Product Information

Size:

50ug

Reactivity:

Human

Source:

Rabbit

Isotype:

IgG

Applications:

ELISA, WB

Recommended dilutions:

ELISA:1:2000-1:10000, WB:1:500-1:5000

Protein Background:

Plays a role in endocytosis and regulates internalization of plasma membrane proteins. Overexpression impairs internalization of SLC2A1/GLUT1 and TRPV4 and increases the levels of SLC2A1/GLUT1 and TRPV4 at the cell membrane. Inhibits the TRPV4 calcium channel activity.

Gene ID:

PACSIN3

Uniprot

Q9UKS6

Synonyms:

Protein kinase C and casein kinase substrate in neurons protein 3 (SH3 domain-containing protein 6511), PACSIN3

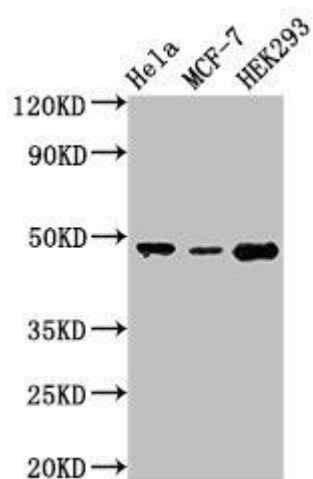
Immunogen:

Recombinant Human Protein kinase C and casein kinase substrate in neurons protein 3 protein (1-300AA).

Storage:

Preservative: 0.03% Proclin 300. Constituents: 50% Glycerol, 0.01M PBS, pH 7.4

Product Images



Western Blot. Positive WB detected in: HeLa whole cell lysate, MCF-7 whole cell lysate, HEK293 whole cell lysate. All lanes: PACSIN3 antibody at 2.8 μ g/ml. Secondary. Goat polyclonal to rabbit IgG at 1/50000 dilution. Predicted band size: 49 kDa. Observed band size: 49 kDa.